



CCT Switchable 120LM/W Back-Lit Panel Light

NEW EPREL
48W
5760LM



Description

- Energy Efficiency Class= "E"
- 3000K/4000K/6000K Switchable
- Driver: Philips Flicker Free
- Long Lifespan: Never Turn Yellow, 3-5 Years Warranty
- High Luminous Efficiency-up To 120lm/w And Ugr<19

3000K ↔ 4000K ↔ 6000K



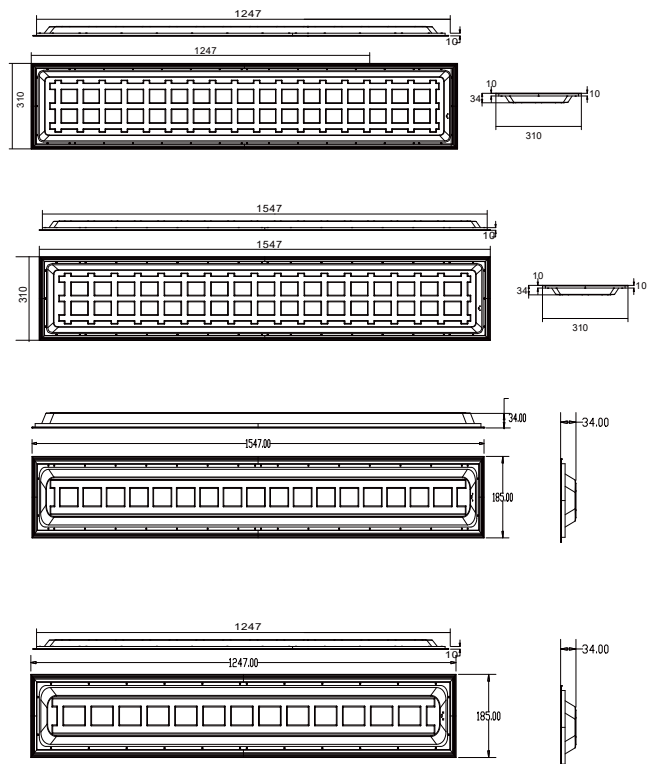
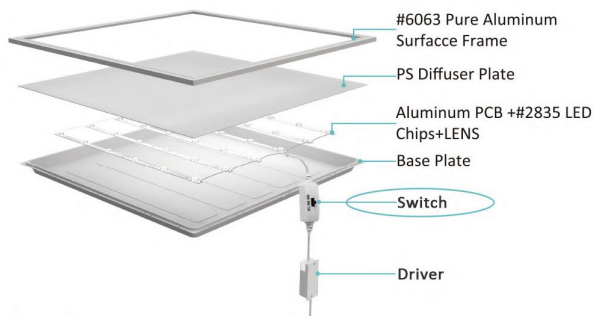
Application

- Hotel
- Commercial Purpose
- Meeting Room
- School
- Other lighting location
- Factory & Office
- Hospital
- Residential & Institution

Instruction



OD34(A)



Photoelectric

Model Number	Dimension	Power	Electric Current	Input	Luminous Efficiency	Lumens Output	Ra
GLM-BPL1247310-36W-CCT	1247*310*34mm	36W	900mA	AC220-240V	120LM/W	4320LM	80/90
GLM-BPL1247310-40W-CCT	1247*310*34mm	40W	1050mA	AC220-240V	120LM/W	4800LM	80/90
GLM-BPL1247185-32W-CCT	1247*185*34mm	32W	750mA	AC220-240V	120LM/W	3840LM	80/90
GLM-BPL1547185-32W-CCT	1547*185*34mm	42W	750mA	AC220-240V	120LM/W	3840LM	80/90
GLM-BPL1547310-45W-CCT	1547*310*34mm	45W	1200mA	AC220-240V	120LM/W	5400LM	80/90
GLM-BPL1547310-48W-CCT	1547*310*34mm	48W	1300mA	AC220-240V	120LM/W	5760LM	80/90

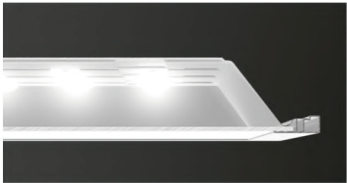
Electrical Driver

Input	AC200-240V
Frequency	50Hz
Output Voltage	DC30-42V
Relevant	EN55015 EN55022 IEC61347-1
Power Factor	>0.9
THD	<20%
Power Efficiency	>90%
Power Brand	Philips
Protection	Surge Short Circuit Over Voltage Over Current Over Temp.
MTBF	Minimum MTBF 50,000 hours at 100% load & 40°C

Product Description

SanAn Chips and Lens

sanan chips use pure gold wire and pure copper bracket, with more stable heat dissipation. The uniform light distribution makes the LED with larger heat dissipation area, and lifespan is up to 7 years.
The lens is made form acrylic material, which makes the light more uniform and soft.



Back board

The back board is made of steel,which will absorb a large portion of heat created by the leds,film laminated surface helps it to be insulated from current,safe for use.
Lay in and Recessed way for your option.

Isolated Driver

Philips Flicker Free,
high efficiency, PF>0.9, THD<20%,
5 years warranty.



Environment

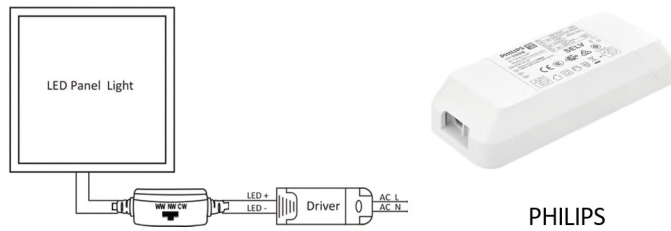
Operating Temperature	-20°C~50 °C
Storage Temperature	-20°C~60°C
Operating Humidity	90% Rh or below(@-20°C~40°C)
Application Area	Indoors
Lifespan	50,000 Hrs



Light Source

LED Type	2835
Color Accuracy(CRI)	80
Color Temperature	3000K/4000K/6000K

Electrical Connection Diagram



Installation

