

## Description

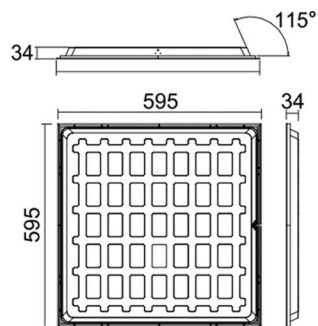
- EPREL2.0, Energy Efficiency Class="B"
- 3000K/4000K/6000K
- Driver: LiFud
- Long Lifespan: Never Turn Yellow, 5Years Warranty
- High Strength Aluminum Alloy Frame, more Stronger
- High Luminous Efficiency-up To 200lm/w And Ugr<19



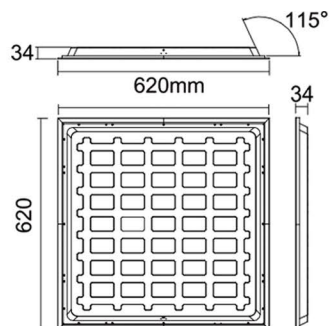
## Photoelectric

Model Number	Dimension	Power	Electric Current	Input	Luminous Efficiency	Lumens Output	CRI	UGR
GLM-BPL6060A-20W/22W	595*595*34mm	20W/22W	550mA	AC220-240V	200LM/W	4000LM/4400LM	>80	<19
GLM-BPL6262A-20W/22W	620*620*34mm	20W/22W	550mA	AC220-240V	200LM/W	4000LM/4400LM	>80	<19

## Dimension

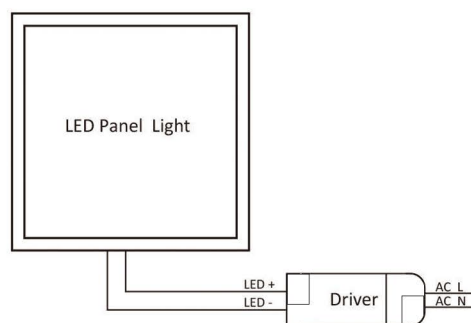


GLM-BPL6060A-20W/22W

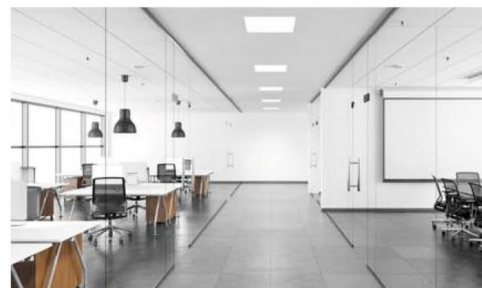
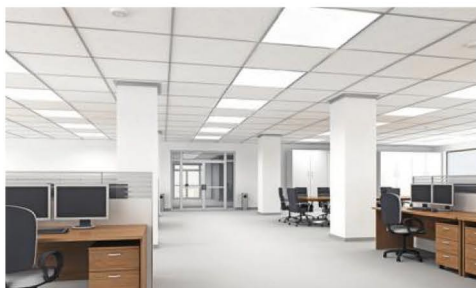
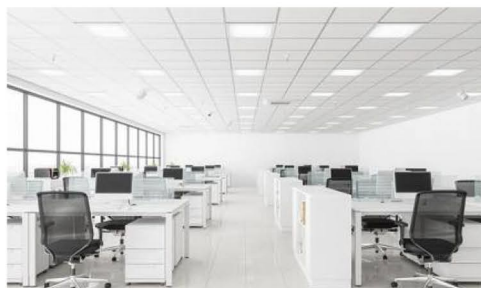


GLM-BPL6262A-20W/22W

## Electrical Connection Diagram



## Application



# ELectrical Driver

Input	AC220-240V
Frequency	50Hz
Output Voltage	DC33-38V
Relevant	EN55015/EN550221/IEC61347-1
Power Factor	>0.95
THD	<15%
Power Efficiency	93%
Power Brand	LiFud
Protection	Surge/Short Circuit/Over Voltage /Over Current/Over Temp
MTBF	Minimum MTBF 50000 hours at 100% load & 40°C

# Driver

## Features

- Super efficiency - efficiency greater than 93%
- No stroboscopic, high PF
- Suitable for Class II lamps
- Five-year warranty (refer to warranty instructions)

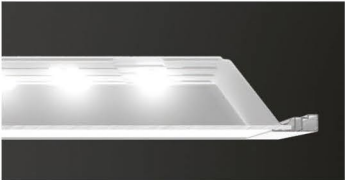
Efficiency >93%



# Product Description

## SanAn Chips and Lens

sanan chips use pure gold wire and pure copper bracket, with more stable heat dissipation. The uniform light distribution makes the LED with larger heat dissipation area, and lifespan is up to 7 years.  
The lens is made form acrylic material, which makes the light more uniform and soft.



## Back board

The back board is made of steel,which will absorb a large portion of heat created by the leds,film laminated surface helps it to be insulated from current,safe for use.

**Isolated Driver**  
LiFud Flicker Free,  
high efficiency, PF>0.95, THD<15%,  
5 years warranty.



# Packing List

Model Number	Outer Carton(L*W*H)	Q'Ty/CTN	G.W/CTN	Qty/40GP
GLM-BPL6060A-20W/22w	660*260*670mm	6PCS	12.7kg	3500PCS
GLM-BPL6262A-20W/22W	680*260*690mm	6PCS	13.6kg	3500PCS



# Installation

1

Back-Lit Panel

2

3