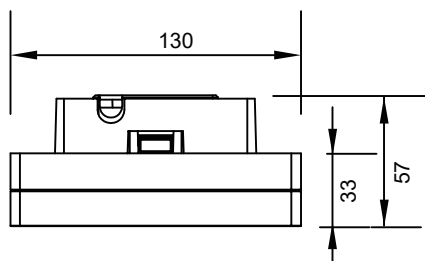


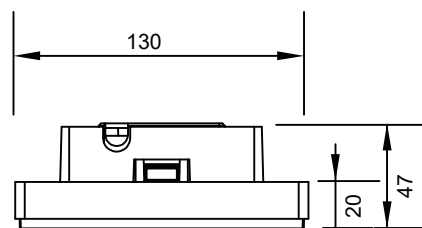
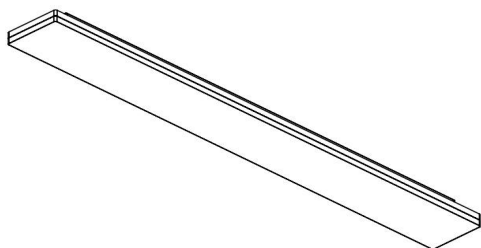
# Mounting instructions

LED Ceiling/Pendant/Track light

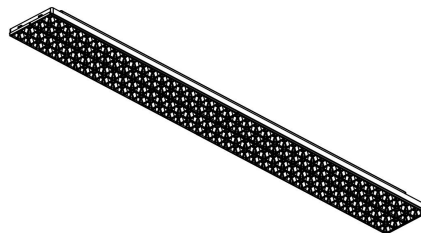
## PLS128 Series



PLS128C with Cover



PLS128CR with Louver



IP20

IP54

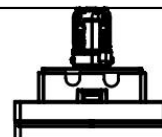
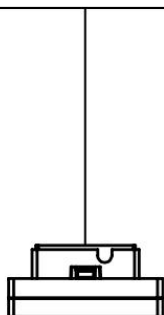
Required Tools



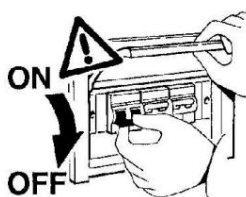
Pendant mounted

Ceiling mounted

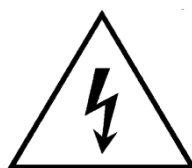
Track mounted



### WARNING:



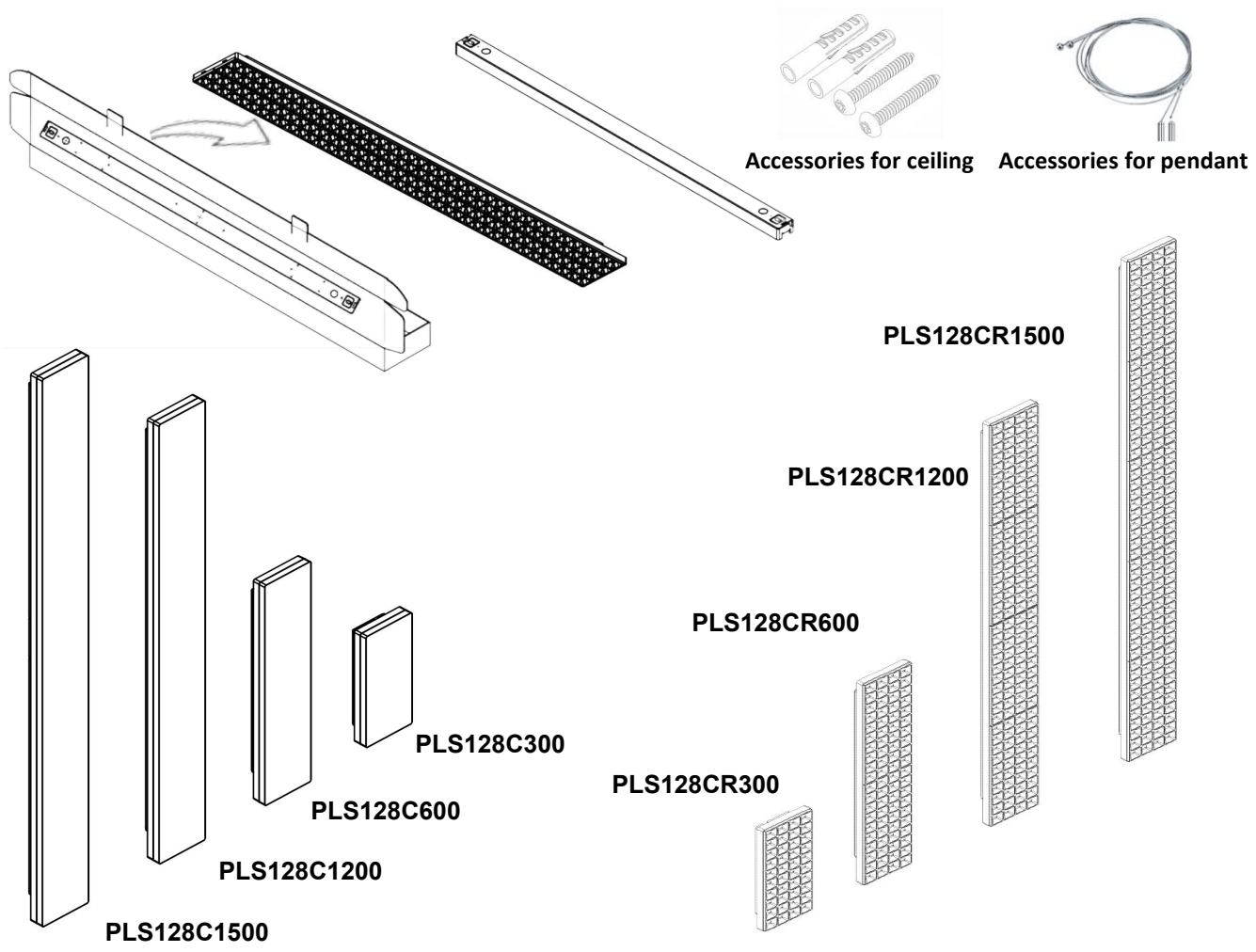
Check that the power is off before conducting any maintenance and assembly work



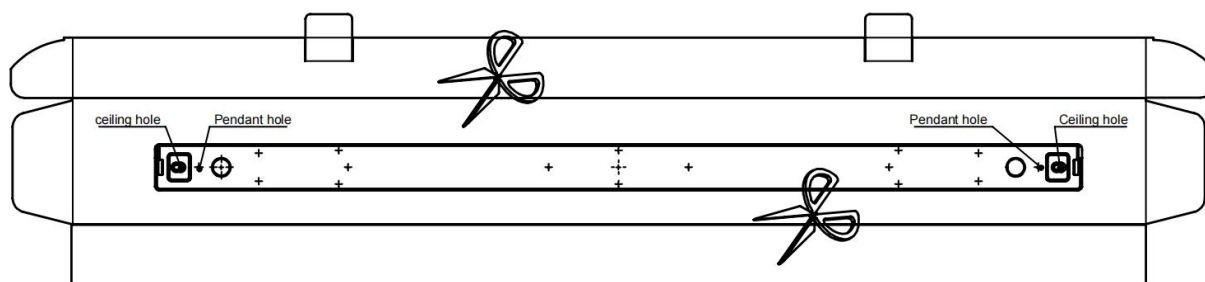
Caution, danger of electric shock



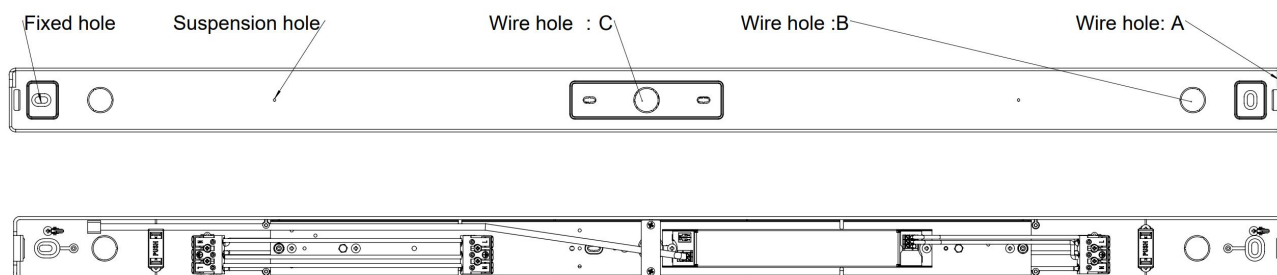
The installation and commissioning of the luminaire as well as any modification to the luminaire may only be performed by authorized personnel (qualified electrician).



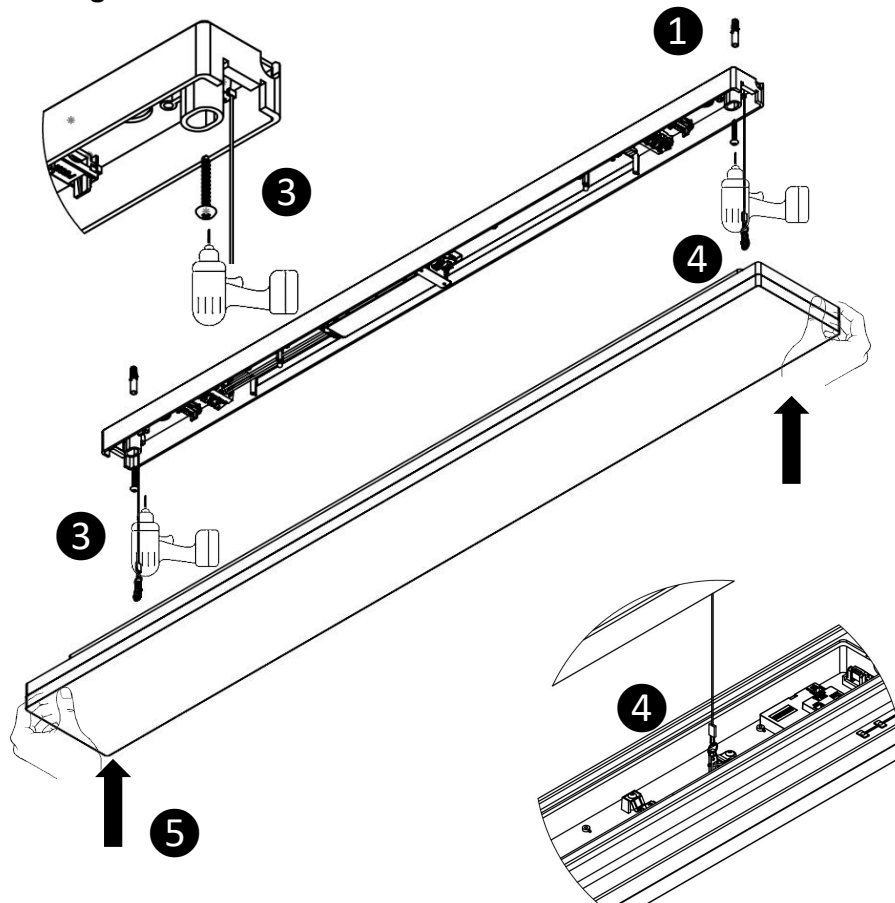
**PLS128 electrical box install drawing(Ceiling&pendant)**



Scale: 1: 1

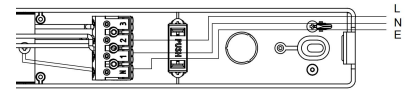


## Ceiling mounted

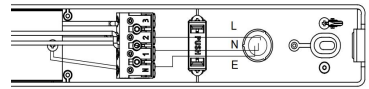


## 2 Wiring diagram:

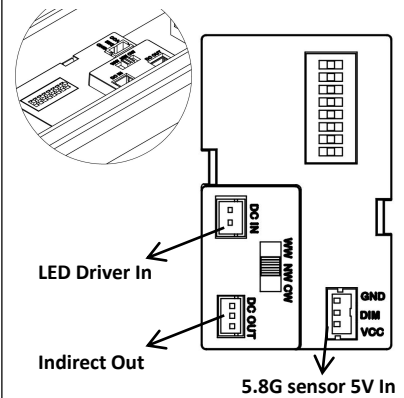
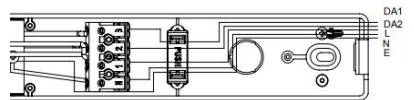
### Option A: from side



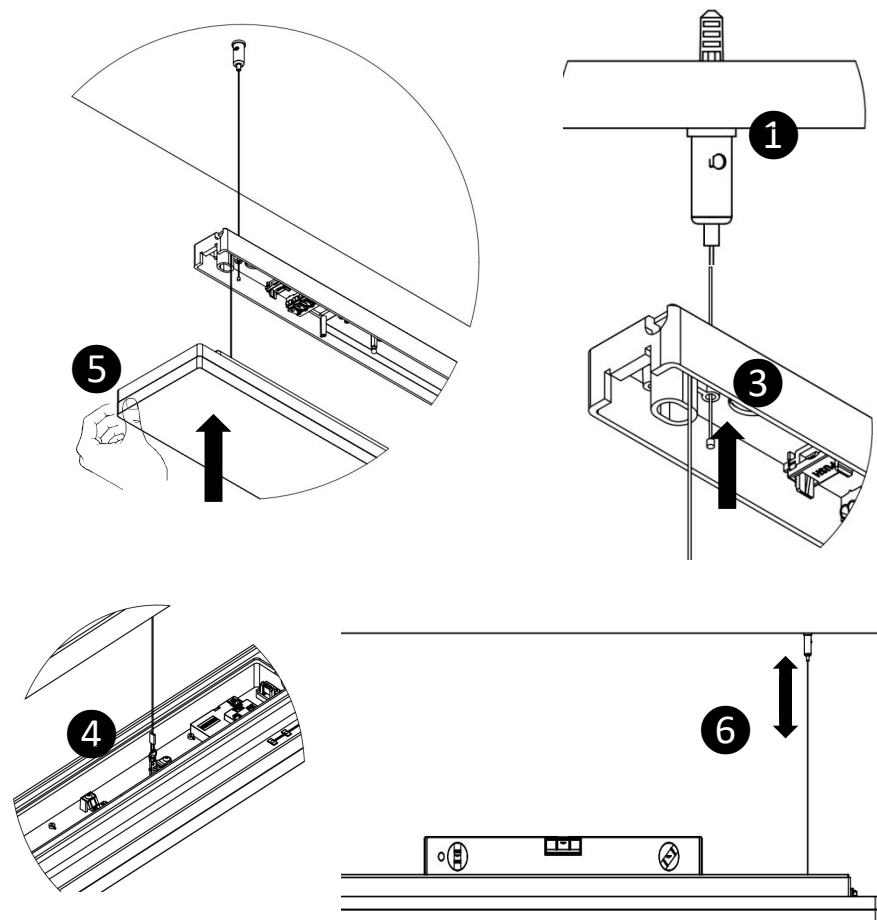
### Option B: from bottom



### Option C: DALI

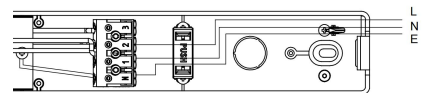


## Pendant mounted

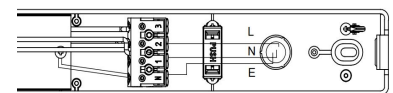


## 2 Wiring diagram:

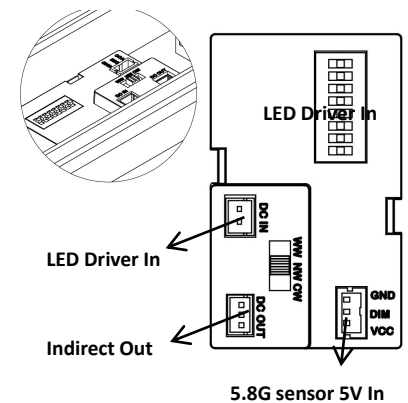
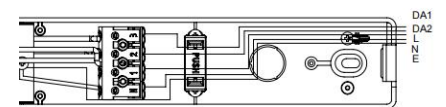
### Option A: from side



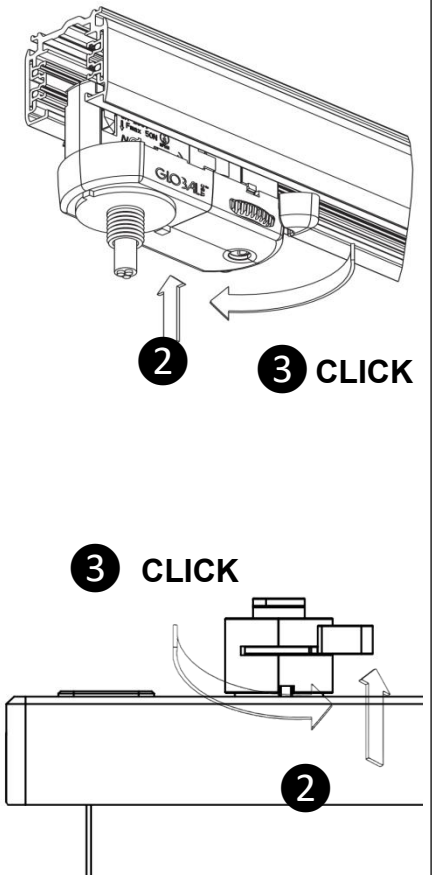
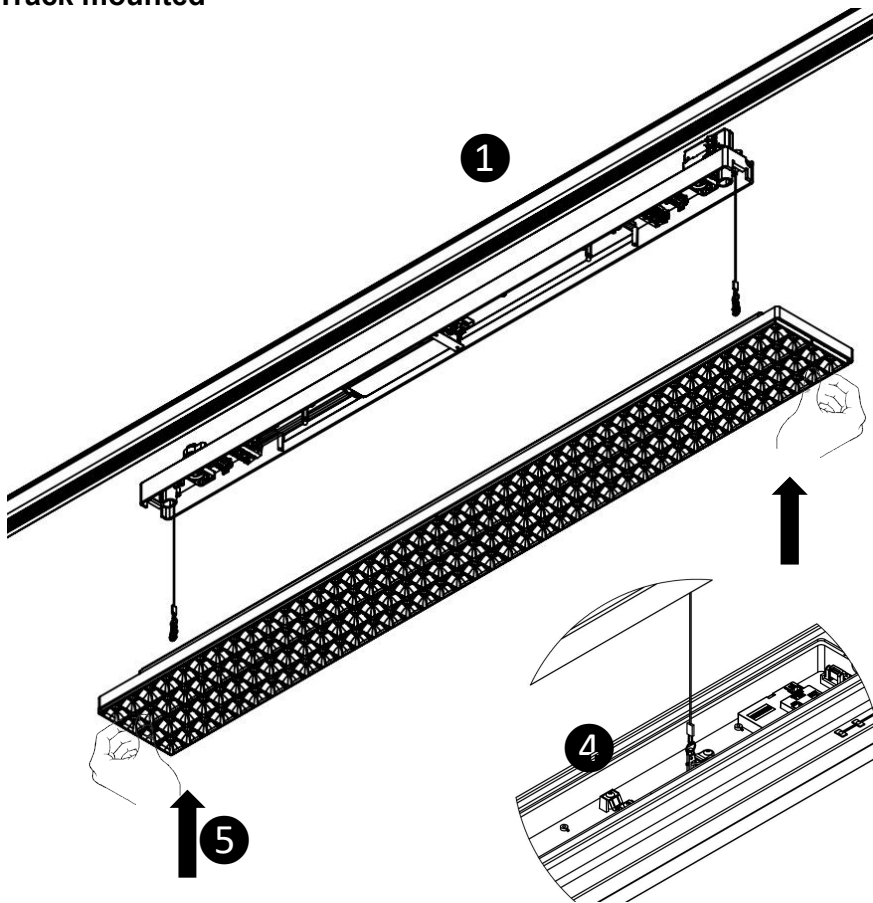
### Option B: from bottom



### Option C: DALI

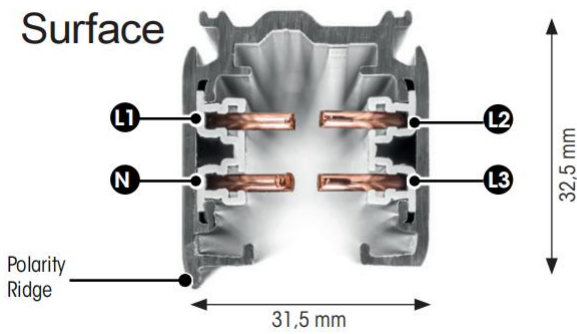


## Track mounted

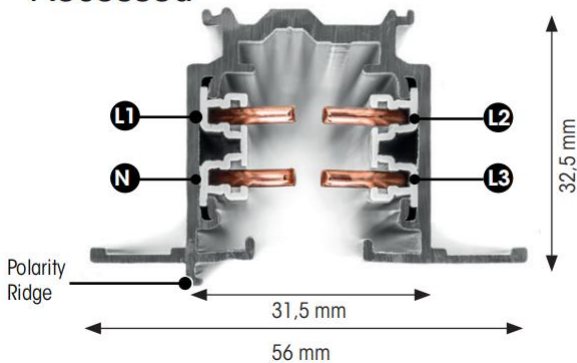


## PLS128- The track wiring diagrams:

### Surface



### Recessed



Power Conductor Cross-Section: 4,0mm<sup>2</sup>

