

# PANEL LAMP INSTALLATION INSTRUCTIONS

## General safety instructions

Danger due to insufficient qualification

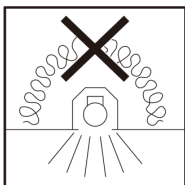
The mounting, installation, commissioning, maintenance, repair, decommissioning and dismantling may only be carried out by expert technicians (e.g. electrical contractors) who are sufficiently qualified and who consider all product-related instructions, relevant directives, standards, laws and other provisions.

## Danger to life due to electric shock

In case you touch live components, there is danger of life due to electric shock.

Before starting any work on the product, please disconnect the product by switching off all power supplies and secure it against being switched on again.

## Danger to life due to overheating



The panel light can be damaged by overheating

- Luminaire not to be covered on the back side
- Satisfying cooling by convection on front and back side to be managed on site.
- Especially covering by insulation material of the back side needs to be avoided.

## Material damage due to connected voltage during installation

Make sure that the luminaires and power supply units are always disconnected from the mains supply during wiring and installation work.

Otherwise, the LED modules may be destroyed.

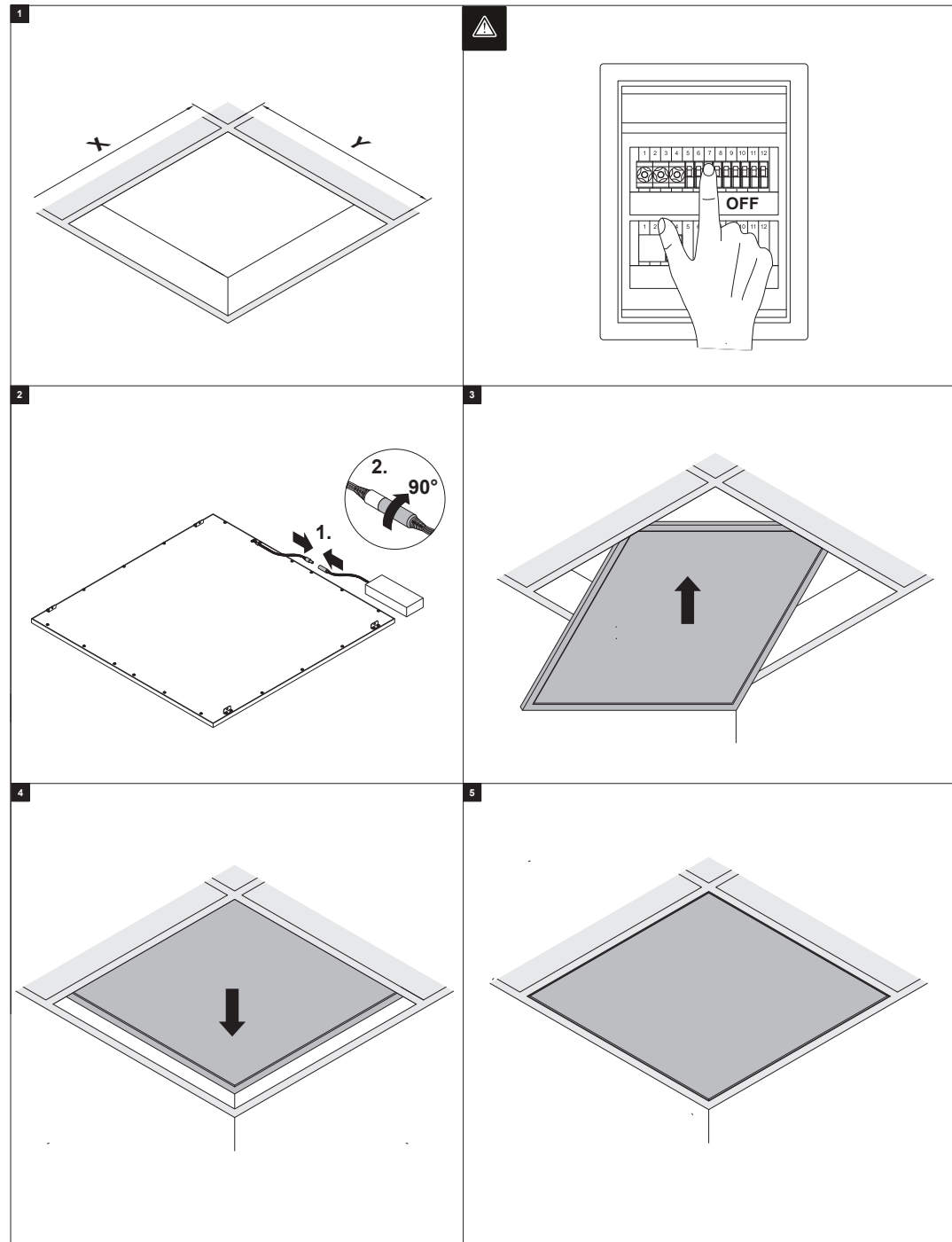
## Disposal

All electrical and electronic equipment waste must be disposed of separately from household waste via the specially provided collection points. By a proper disposal of your old device you avoid any environmental damage. Further information about the disposal can be obtained from your local authorities or from the retailer you purchased the product from.

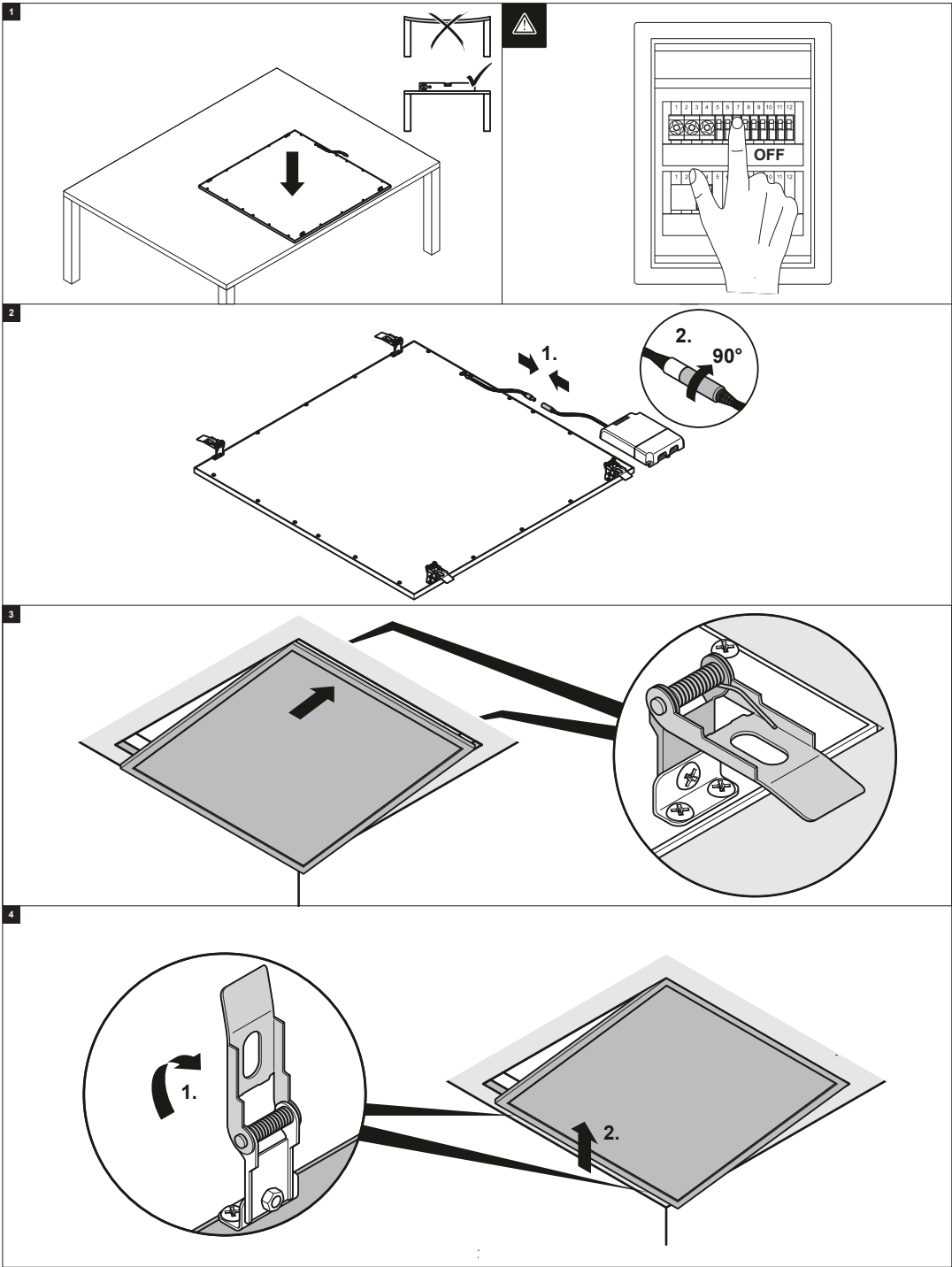


The packaging and packaging material consist only of environmentally friendly materials. It can be disposed of at the local Recycling Collection Points. Please contact your local responsible authority for information about the possibilities of recycling or other safe and environmentally neutral disposal.

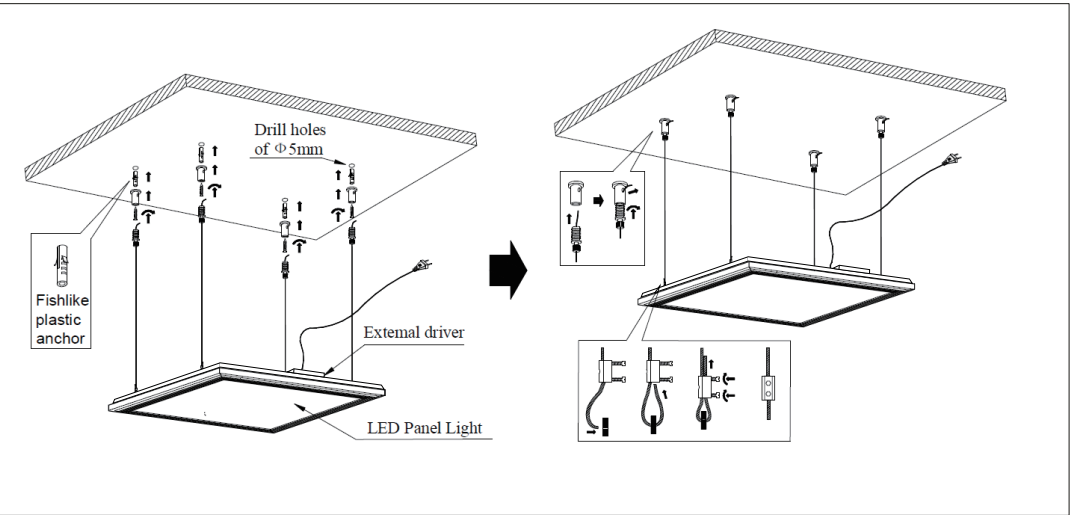
## Embedded Installation



Spring mounting



Suspended type



Ceiling surface mounted

