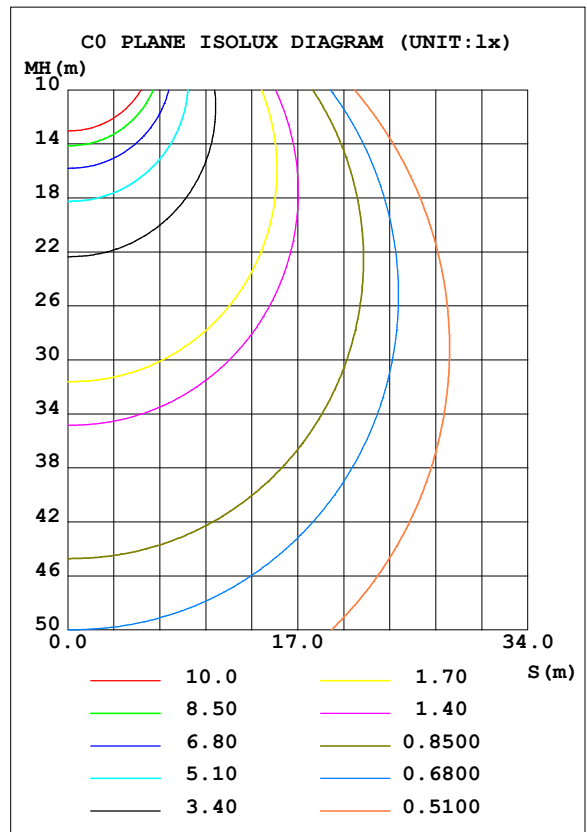
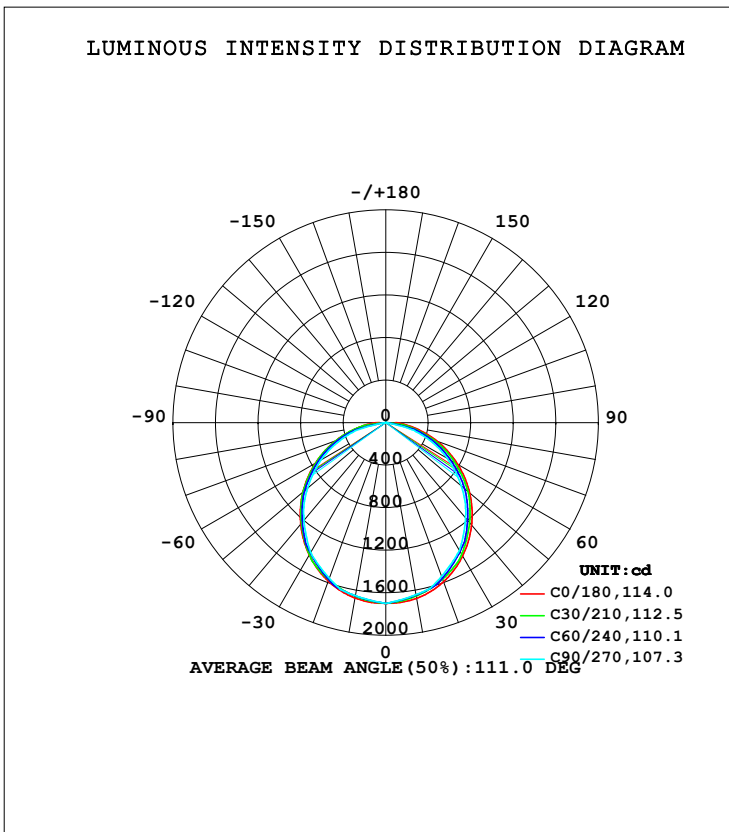


LUMINAIRE PHOTOMETRIC TEST REPORT

Test:U:220.15V I:0.2134A P:38.825W PF:0.9619 Freq:49.99Hz Lamp Flux:4749.6x1 lm		
NAME: GLM-PLS128C	TYPE:LED	WEIGHT:
SPEC.:	DIM.:	SERIAL No.:1
MFR.: EVERFINE	SUR.:	Shielding Angle:

DATA OF LAMP		PHOTOMETRIC DATA Eff: 122.33 lm/W			
MODEL		I _{max} (cd)	1700	S/MH (C0/180)	1.26
NOMINAL POWER (W)		LOR (%)	100.0	S/MH (C90/270)	1.24
RATED VOLTAGE (V)	220.0	TOTAL FLUX (lm)	4749.6	η UP, DN (C0-180)	0.0, 49.4
NOMINAL FLUX (lm)	4749.6	CIE CLASS	DIRECT	η UP, DN (C180-360)	0.0, 50.6
LAMPS INSIDE	1	η up (%)	0.0	CIBSE SHR NOM	1.25
TEST VOLTAGE (V)	220	η down (%)	100.0	CIBSE SHR MAX	1.35



H(β) Range: -90 - 90DEG
H(β) Interval: 1.0DEG
Test Speed: HIGH
Temperature: 25.3DEG
Operators:
Test Date: 04 December 2023

V(B) Range: -75 - 75DEG
V(B) Interval: 5.0DEG
Test System: EVERFINE GO-2000A_V1 SYSTEM V2.0.366
Humidity: 65.0%
Test Distance: 7.500m [K=1.0667]
Remarks: TÜV RHEINLAND

ZONAL FLUX DIAGRAM

ZONAL FLUX DIAGRAM:

γ	C0	C45	C90	C135	C180	C225	C270	C315	γ	Φ zone	Φ total	%lum, lamp
10	1677	1650	1642	1648	1674	1655	1652	1657	0- 10	159.6	159.6	3.36,3.36
20	1591	1571	1538	1569	1586	1582	1556	1585	10- 20	457.2	616.8	13,13
30	1448	1408	1387	1405	1438	1421	1413	1426	20- 30	689.8	1307	27.5,27.5
40	1256	1224	1168	1219	1245	1239	1198	1245	30- 40	828.1	2135	44.9,44.9
50	1031	984.5	927.2	981.0	1017	1003	961.6	1007	40- 50	855.6	2990	63,63
60	779.9	730.2	664.6	727.4	766.3	751.6	702.7	753.8	50- 60	772.8	3763	79.2,79.2
70	515.0	467.4	392.2	465.1	502.3	490.2	427.2	490.9	60- 70	595.3	4358	91.8,91.8
80	265.4	185.3	0	185.8	255.4	202.8	0	199.6	70- 80	338.2	4697	98.9,98.9
90	89.70	0	0	0	80.29	0	0	0	80- 90	53.04	4750	100,100
100									90-100			
110									100-110			
120									110-120			
130									120-130			
140									130-140			
150									140-150			
160									150-160			
170									160-170			
180									170-180			
DEG	LUMINOUS INTENSITY:cd									UNIT:lm		

Conical surface Flux(90deg): 2565.9 lm

%lum = 54.0%

%lamp = 54.0%

Conical surface Flux(120deg): 3763.1 lm

%lum = 79.2%

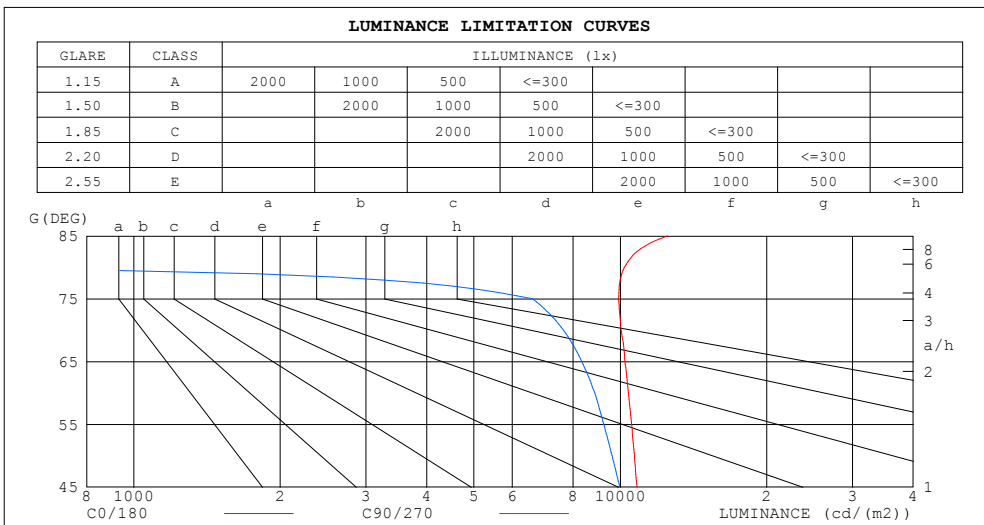
%lamp = 79.2%

H(β) Range:-90 - 90DEG
H(β) Interval: 1.0DEG
Test Speed: HIGH
Temperature:25.3DEG
Operators:
Test Date:04 December 2023

V(B) Range:-75 - 75DEG
V(B) Interval: 5.0DEG
Test System:EVERFINE GO-2000A_V1 SYSTEM V2.0.366
Humidity:65.0%
Test Distance:7.500m [K=1.0667]
Remarks: TÜV RHEINLAND

LUMINANCE LIMITATION CURVES

Test:U:220.15V I:0.2134A P:38.825W PF:0.9619 Freq:49.99Hz Lamp Flux:4749.6x1 lm		
NAME: GLM-PLS128C	TYPE:LED	WEIGHT:
SPEC.:	DIM.:	SERIAL No.:1
MFR.: EVERFINE	SUR.:	Shielding Angle:



LUMINANCE cd/(m2)		
G (DEG)	C0/180	C90/270
85	12510	0
80	10188	0
75	9921	6593
70	10039	7644
65	10223	8335
60	10399	8861
55	10550	9251
50	10690	9617
45	10821	9980

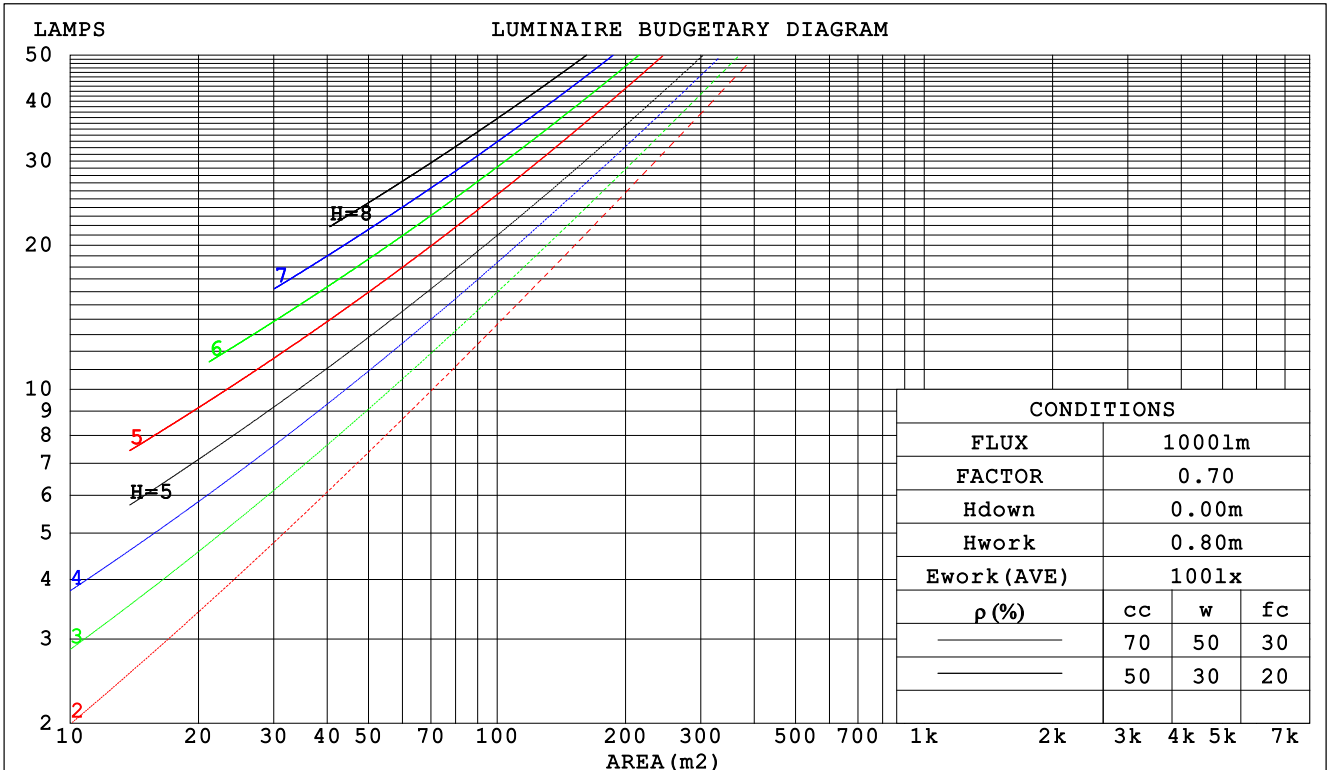
H(β) Range:-90 - 90DEG
H(β) Interval: 1.0DEG
Test Speed: HIGH
Temperature:25.3DEG
Operators:
Test Date:04 December 2023

V(B) Range:-75 - 75DEG
V(B) Interval: 5.0DEG
Test System:EVERFINE GO-2000A_V1 SYSTEM V2.0.366
Humidity:65.0%
Test Distance:7.500m [K=1.0667]
Remarks: TÜV RHEINLAND

CU AND LUMINAIRE BUDGETARY ESTIMATE DIAGRAM

Test:U:220.15V I:0.2134A P:38.825W PF:0.9619 Freq:49.99Hz Lamp Flux:4749.6x1 lm		
NAME: GLM-PLS128C	TYPE:LED	WEIGHT:
SPEC.:	DIM.:	SERIAL No.:1
MFR.: EVERFINE	SUR.:	Shielding Angle:

ρ_{cc}	80%			70%			50%			30%			10%			0
ρ_w	50%	30%	10%	50%	30%	10%	50%	30%	10%	50%	30%	10%	50%	30%	10%	0
ρ_{fc}	20%			20%			20%			20%			20%			0
RCR	RCR:Room Cavity Ratio						Coefficients of Utilization(CU)									
0.0	1.19	1.19	1.19	1.16	1.16	1.16	1.11	1.11	1.11	1.06	1.06	1.06	1.02	1.02	1.02	1.00
1.0	1.04	1.00	.96	1.02	.98	.95	.98	.95	.92	.94	.91	.89	.90	.88	.86	.84
2.0	.91	.84	.78	.89	.83	.77	.85	.80	.76	.82	.78	.74	.79	.75	.72	.70
3.0	.80	.71	.65	.78	.70	.64	.75	.69	.63	.72	.67	.62	.70	.65	.61	.59
4.0	.71	.62	.55	.69	.61	.55	.67	.60	.54	.64	.58	.53	.62	.57	.52	.50
5.0	.63	.54	.47	.62	.53	.47	.60	.52	.47	.58	.51	.46	.56	.50	.45	.43
6.0	.57	.48	.41	.56	.47	.41	.54	.46	.41	.52	.45	.40	.51	.45	.40	.38
7.0	.51	.43	.36	.51	.42	.36	.49	.41	.36	.48	.41	.36	.46	.40	.35	.33
8.0	.47	.38	.32	.46	.38	.32	.45	.37	.32	.44	.37	.32	.42	.36	.32	.30
9.0	.43	.35	.29	.42	.35	.29	.41	.34	.29	.40	.34	.29	.39	.33	.29	.27
10.0	.40	.32	.26	.39	.32	.26	.38	.31	.26	.37	.31	.26	.36	.30	.26	.24



H(β) Range:-90 - 90DEG
H(β) Interval: 1.0DEG
Test Speed: HIGH
Temperature:25.3DEG
Operators:
Test Date:04 December 2023

V(B) Range:-75 - 75DEG
V(B) Interval: 5.0DEG
Test System:EVERFINE GO-2000A_V1 SYSTEM V2.0.366
Humidity:65.0%
Test Distance:7.500m [K=1.0667]
Remarks: TÜV RHEINLAND

WEC AND CCEC

Test:U:220.15V I:0.2134A P:38.825W PF:0.9619 Freq:49.99Hz Lamp Flux:4749.6x1 lm		
NAME: GLM-PLS128C	TYPE:LED	WEIGHT:
SPEC.:	DIM.:	SERIAL No.:1
MFR.: EVERFINE	SUR.:	Shielding Angle:

ρ _{cc}	80%			70%			50%			30%			10%			0
ρ _w	50%	30%	10%	50%	30%	10%	50%	30%	10%	50%	30%	10%	50%	30%	10%	0
ρ _{fc}	20%			20%			20%			20%			20%			0
RCR	RCR:Room Cavity Ratio						Wall Exitance Coefficients (WEC)									
0.0																
1.0	.303	.172	.055	.296	.169	.054	.283	.162	.052	.270	.156	.050	.259	.150	.048	
2.0	.288	.158	.048	.282	.155	.048	.271	.150	.047	.260	.146	.046	.250	.141	.045	
3.0	.268	.143	.043	.263	.141	.042	.252	.137	.042	.243	.133	.041	.234	.129	.040	
4.0	.248	.129	.038	.243	.127	.038	.234	.124	.037	.225	.121	.037	.218	.118	.036	
5.0	.230	.117	.034	.225	.116	.034	.217	.113	.033	.209	.111	.033	.202	.108	.032	
6.0	.213	.107	.031	.209	.106	.030	.202	.103	.030	.195	.101	.030	.189	.099	.030	
7.0	.198	.098	.028	.195	.097	.028	.188	.095	.027	.182	.094	.027	.177	.092	.027	
8.0	.185	.091	.025	.182	.090	.025	.176	.088	.025	.171	.087	.025	.166	.085	.025	
9.0	.174	.084	.023	.171	.083	.023	.166	.082	.023	.161	.081	.023	.156	.079	.023	
10.0	.163	.078	.022	.161	.078	.022	.156	.077	.022	.152	.075	.021	.148	.074	.021	

ρ _{cc}	80%			70%			50%			30%			10%			0
ρ _w	50%	30%	10%	50%	30%	10%	50%	30%	10%	50%	30%	10%	50%	30%	10%	0
ρ _{fc}	20%			20%			20%			20%			20%			0
RCR	RCR:Room Cavity Ratio						Ceiling Cavity Exitance Coefficients (CCEC)									
0.0	.190	.190	.190	.163	.163	.163	.111	.111	.111	.064	.064	.064	.020	.020	.020	
1.0	.180	.156	.135	.154	.134	.116	.105	.092	.080	.061	.053	.047	.019	.017	.015	
2.0	.172	.132	.098	.147	.114	.085	.101	.079	.059	.058	.046	.035	.019	.015	.011	
3.0	.164	.114	.075	.141	.099	.065	.097	.068	.045	.056	.040	.027	.018	.013	.009	
4.0	.157	.101	.058	.134	.087	.051	.092	.061	.036	.053	.036	.021	.017	.012	.007	
5.0	.149	.091	.047	.128	.078	.041	.088	.055	.029	.051	.032	.017	.016	.010	.006	
6.0	.142	.082	.039	.122	.071	.034	.084	.050	.024	.049	.029	.014	.016	.010	.005	
7.0	.135	.075	.033	.116	.065	.029	.080	.046	.021	.047	.027	.012	.015	.009	.004	
8.0	.129	.069	.029	.111	.060	.025	.077	.042	.018	.045	.025	.011	.014	.008	.004	
9.0	.123	.065	.025	.106	.056	.022	.073	.039	.016	.043	.023	.009	.014	.008	.003	
10.0	.117	.060	.022	.101	.052	.020	.070	.037	.014	.041	.022	.008	.013	.007	.003	

H(β) Range:-90 - 90DEG
H(β) Interval: 1.0DEG
Test Speed: HIGH
Temperature:25.3DEG
Operators:
Test Date:04 December 2023

V(B) Range:-75 - 75DEG
V(B) Interval: 5.0DEG
Test System:EVERFINE GO-2000A_V1 SYSTEM V2.0.366
Humidity:65.0%
Test Distance:7.500m [K=1.0667]
Remarks: TÜV RHEINLAND

UGR(Unified Glare Rating) Table

Test:U:220.15V I:0.2134A P:38.825W PF:0.9619 Freq:49.99Hz Lamp Flux:4749.6x1 lm										
NAME: GLM-PLS128C					TYPE:LED			WEIGHT:		
SPEC.:					DIM.:			SERIAL No.:1		
MFR.: EVERFINE					SUR.:			Shielding Angle:		
ceiling/cavity	0.7	0.7	0.5	0.5	0.3	0.7	0.7	0.5	0.5	0.3
walls	0.5	0.3	0.5	0.3	0.3	0.5	0.3	0.5	0.3	0.3
working plane	0.2	0.2	0.2	0.2	0.2	0.2	0.2	0.2	0.2	0.2
Room dimensions	Viewed crosswise					Viewed endwise				
x = 2H y = 2H	21.1	22.6	21.4	22.8	23.0	20.5	22.1	20.8	22.3	22.5
3H	22.8	24.2	23.1	24.4	24.6	21.9	23.3	22.2	23.5	23.8
4H	23.4	24.8	23.8	25.0	25.3	22.4	23.7	22.7	24.0	24.2
6H	24.0	25.2	24.3	25.5	25.8	22.4	23.7	22.8	23.9	24.2
8H	24.2	25.4	24.5	25.7	26.0	22.4	23.6	22.7	23.9	24.2
12H	24.4	25.6	24.8	25.9	26.2	22.3	23.5	22.7	23.8	24.1
4H 2H	21.7	23.0	22.0	23.3	23.5	21.2	22.6	21.6	22.8	23.1
3H	23.5	24.7	23.9	25.0	25.3	22.8	24.0	23.2	24.3	24.6
4H	24.3	25.4	24.7	25.7	26.0	23.4	24.5	23.8	24.8	25.2
6H	25.0	25.9	25.4	26.3	26.6	23.5	24.4	23.9	24.8	25.2
8H	25.3	26.1	25.7	26.5	26.9	23.5	24.3	23.9	24.7	25.1
12H	25.6	26.4	26.0	26.8	27.2	23.4	24.2	23.8	24.6	25.0
8H 4H	24.6	25.5	25.0	25.8	26.2	23.8	24.7	24.2	25.0	25.4
6H	25.4	26.1	25.9	26.5	27.0	23.9	24.7	24.4	25.1	25.5
8H	25.8	26.5	26.3	26.9	27.3	23.9	24.5	24.3	25.0	25.4
12H	26.2	26.8	26.7	27.2	27.7	23.8	24.4	24.3	24.8	25.3
12H 4H	24.5	25.4	25.0	25.7	26.1	23.8	24.6	24.3	25.0	25.4
6H	25.4	26.0	25.9	26.5	26.9	24.0	24.6	24.4	25.0	25.5
8H	25.8	26.4	26.3	26.8	27.3	23.9	24.5	24.4	24.9	25.4
Variations with the observer position at spacings:										
S = 1.0H	+ 0.1 / - 0.1					+ 0.2 / - 0.3				
1.5H	+ 0.1 / - 0.2					+ 0.1 / - 0.3				
2.0H	+ 0.3 / - 0.4					+ 0.2 / - 0.4				

CIE Pub.117, 4750 lm Total Lamp Luminous Flux Corrected (8log(F/F0) = 5.4)

H(β) Range:-90 - 90DEG	V(B) Range:-75 - 75DEG
H(β) Interval: 1.0DEG	V(B) Interval: 5.0DEG
Test Speed: HIGH	Test System:EVERFINE GO-2000A_V1 SYSTEM V2.0.366
Temperature:25.3DEG	Humidity:65.0%
Operators:	Test Distance:7.500m [K=1.0667]
Test Date:04 December 2023	Remarks: TÜV RHEINLAND

UTILIZATION FACTORS TABLE

Test:U:220.15V I:0.2134A P:38.825W PF:0.9619 Freq:49.99Hz Lamp Flux:4749.6x1 lm		
NAME: GLM-PLS128C	TYPE:LED	WEIGHT:
SPEC.:	DIM.:	SERIAL No.:1
MFR.: EVERFINE	SUR.:	Shielding Angle:

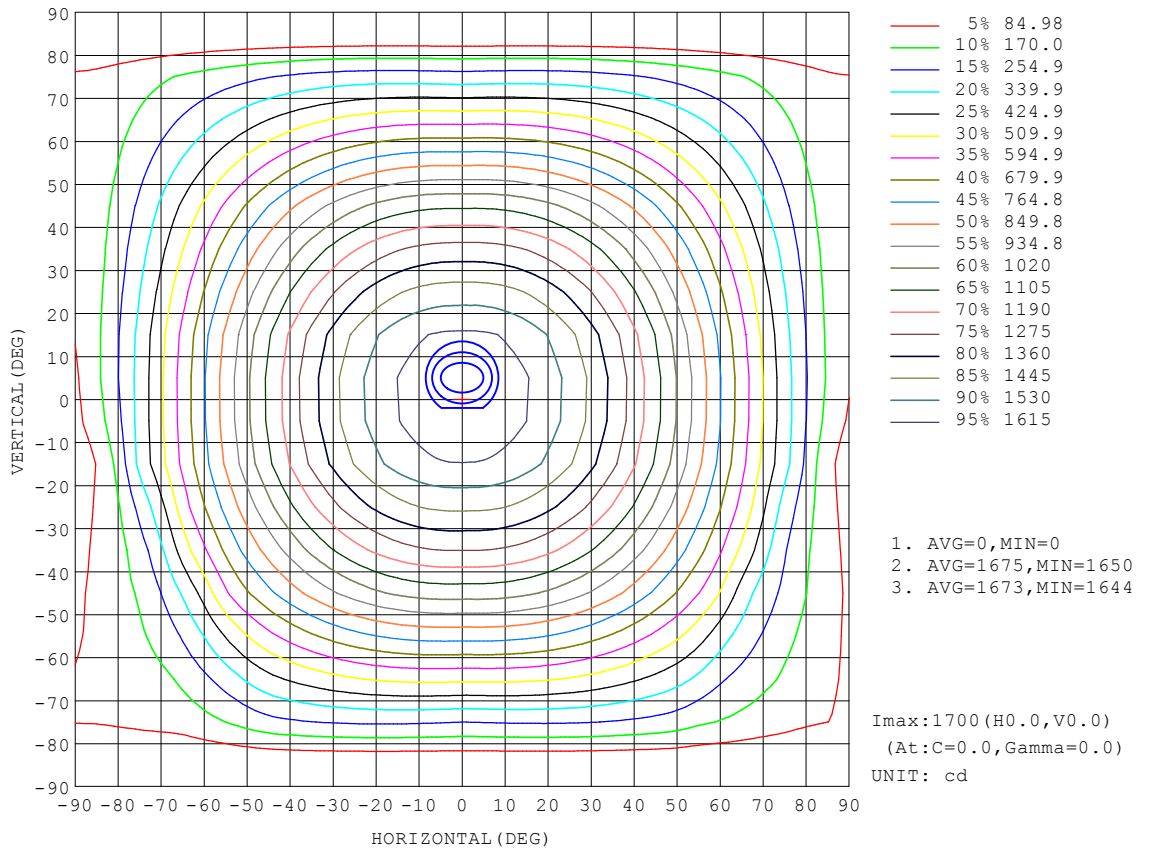
REFLECTANCE										
Ceiling	0.8	0.8	0.8	0.7	0.7	0.7	0.5	0.5	0.5	0
Walls	0.7	0.5	0.3	0.7	0.5	0.3	0.7	0.5	0.3	0
Working plane	0.2	0.2	0.2	0.2	0.2	0.2	0.2	0.2	0.2	0
ROOM INDEX	UTILIZATION FACTORS (PERCENT) k(RI) x RCR = 5									
k = 0.60	58	46	39	57	46	39	56	45	39	32
0.80	68	56	49	67	56	49	65	55	48	41
1.00	76	65	58	75	65	58	73	66	57	50
1.25	83	73	66	82	72	65	79	71	65	57
1.50	88	79	72	87	78	71	84	76	70	62
2.00	95	87	80	93	86	80	90	83	78	70
2.50	99	91	85	97	90	85	93	87	83	74
3.00	103	96	90	100	94	89	96	91	87	79
4.00	107	101	96	104	99	95	100	96	92	84
5.00	109	104	100	107	102	99	102	99	96	87
ROOM INDEX	UF(total)									Direct
According to DIN EN 13032-2 2004			Suspended				SHRNOM = 1.25			

H(β) Range:-90 - 90DEG
H(β) Interval: 1.0DEG
Test Speed: HIGH
Temperature:25.3DEG
Operators:
Test Date:04 December 2023

V(B) Range:-75 - 75DEG
V(B) Interval: 5.0DEG
Test System:EVERFINE GO-2000A_V1 SYSTEM V2.0.366
Humidity:65.0%
Test Distance:7.500m [K=1.0667]
Remarks: TÜV RHEINLAND

ISOCANDELA DIAGRAM

Test:U:220.15V I:0.2134A P:38.825W PF:0.9619 Freq:49.99Hz Lamp Flux:4749.6x1 lm		
NAME: GLM-PLS128C	TYPE:LED	WEIGHT:
SPEC.:	DIM.:	SERIAL No.:1
MFR.: EVERFINE	SUR.:	Shielding Angle:

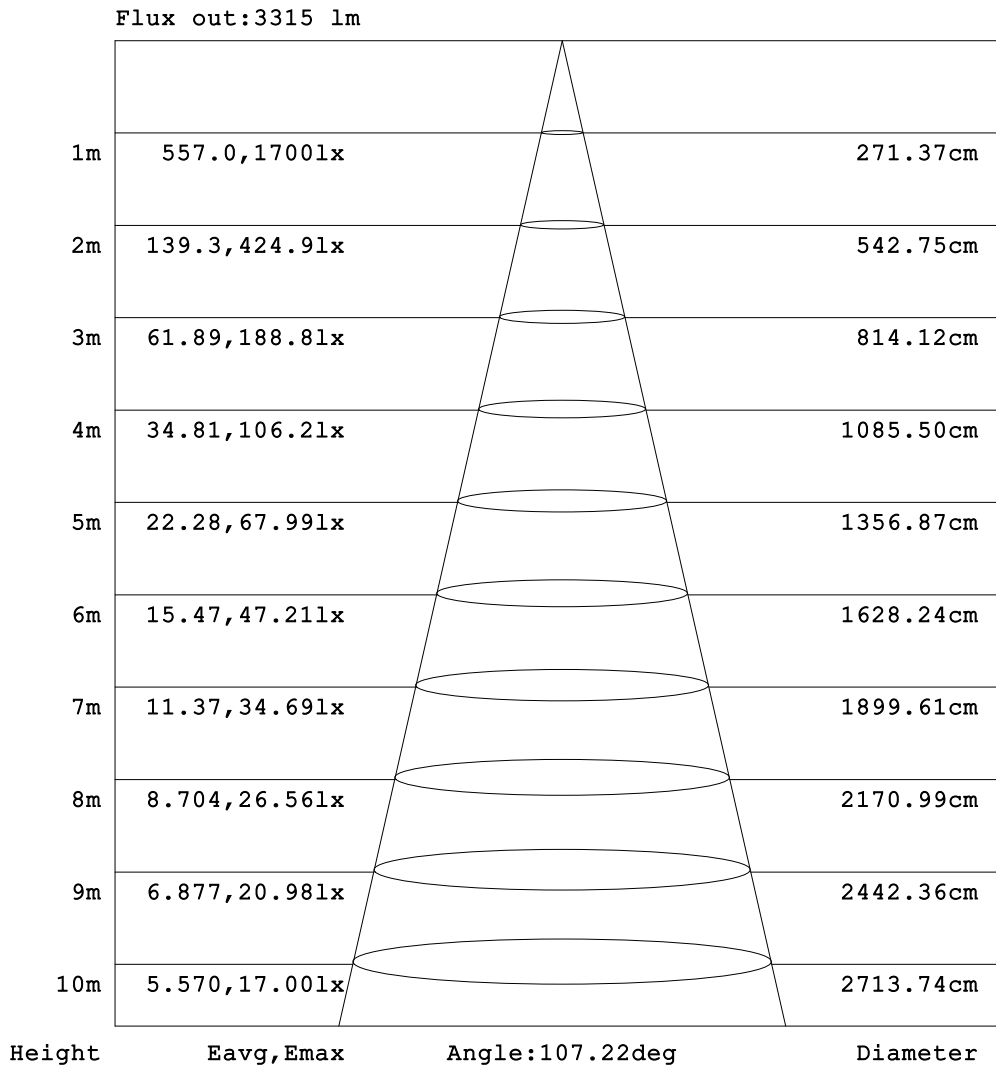


H(β) Range:-90 - 90DEG
 H(β) Interval: 1.0DEG
 Test Speed: HIGH
 Temperature:25.3DEG
 Operators:
 Test Date:04 December 2023

V(B) Range:-75 - 75DEG
 V(B) Interval: 5.0DEG
 Test System:EVERFINE GO-2000A_V1 SYSTEM V2.0.366
 Humidity:65.0%
 Test Distance:7.500m [K=1.0667]
 Remarks: TÜV RHEINLAND

AAI Figure

Test:U:220.15V I:0.2134A P:38.825W PF:0.9619 Freq:49.99Hz Lamp Flux:4749.6x1 lm		
NAME: GLM-PLS128C	TYPE:LED	WEIGHT:
SPEC.:	DIM.:	SERIAL No.:1
MFR.: EVERFINE	SUR.:	Shielding Angle:



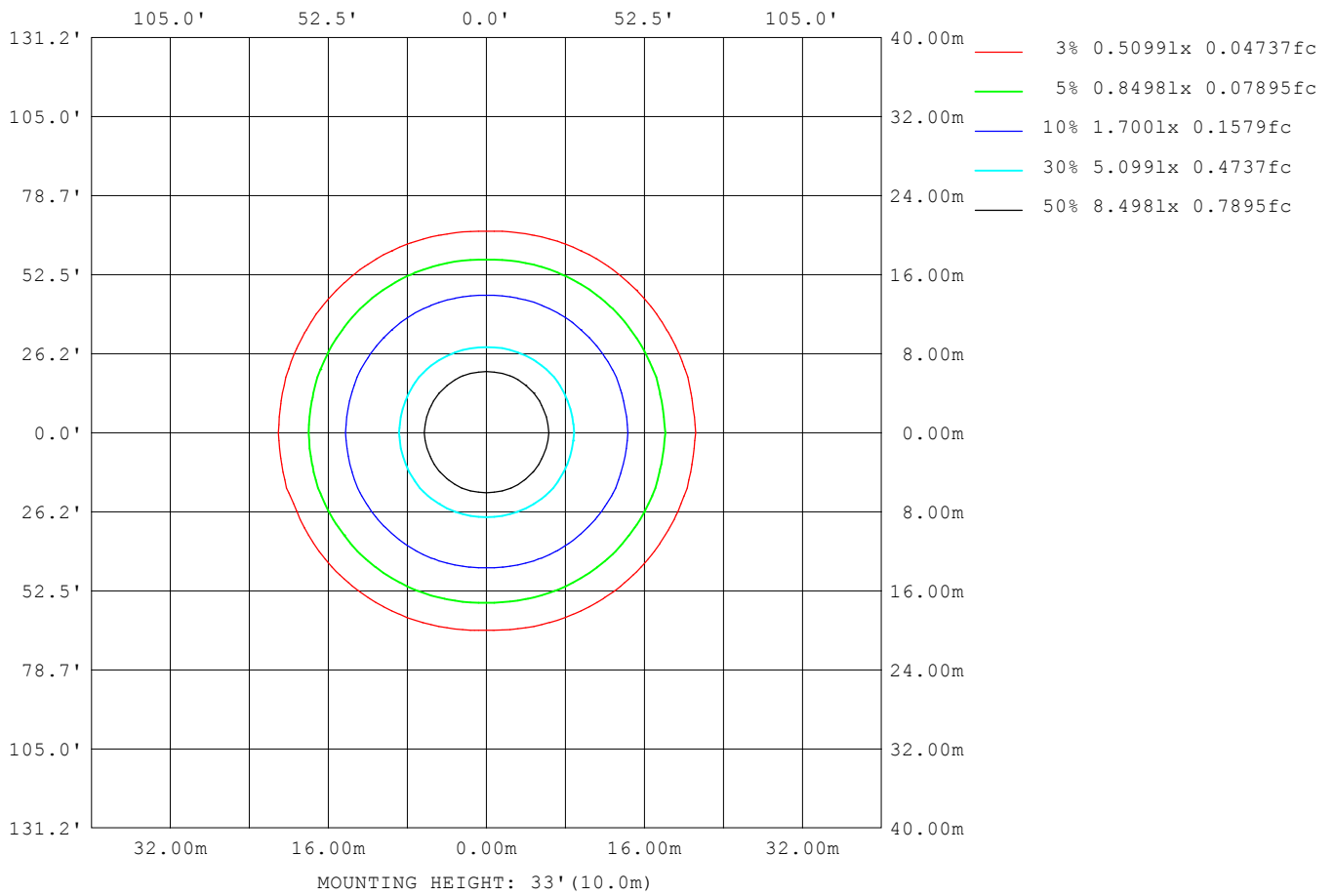
Note:The Curves indicate the illuminated area and the average illumination when the luminaire is at different distance.

H(β) Range:-90 - 90DEG
H(β) Interval: 1.0DEG
Test Speed: HIGH
Temperature:25.3DEG
Operators:
Test Date:04 December 2023

V(B) Range:-75 - 75DEG
V(B) Interval: 5.0DEG
Test System:EVERFINE GO-2000A_V1 SYSTEM V2.0.366
Humidity:65.0%
Test Distance:7.500m [K=1.0667]
Remarks: TÜV RHEINLAND

ISOLUX DIAGRAM

Test:U:220.15V I:0.2134A P:38.825W PF:0.9619 Freq:49.99Hz Lamp Flux:4749.6x1 lm		
NAME: GLM-PLS128C	TYPE:LED	WEIGHT:
SPEC.:	DIM.:	SERIAL No.:1
MFR.: EVERFINE	SUR.:	Shielding Angle:



H(β) Range:-90 - 90DEG
 H(β) Interval: 1.0DEG
 Test Speed: HIGH
 Temperature:25.3DEG
 Operators:
 Test Date:04 December 2023

V(B) Range:-75 - 75DEG
 V(B) Interval: 5.0DEG
 Test System:EVERFINE GO-2000A_V1 SYSTEM V2.0.366
 Humidity:65.0%
 Test Distance:7.500m [K=1.0667]
 Remarks: TÜV RHEINLAND

LED Avg.L Report

Test:U:220.15V I:0.2134A P:38.825W PF:0.9619 Freq:49.99Hz Lamp Flux:4749.6x1 lm		
NAME: GLM-PLS128C	TYPE:LED	WEIGHT:
SPEC.:	DIM.:	SERIAL No.:1
MFR.: EVERFINE	SUR.:	Shielding Angle:

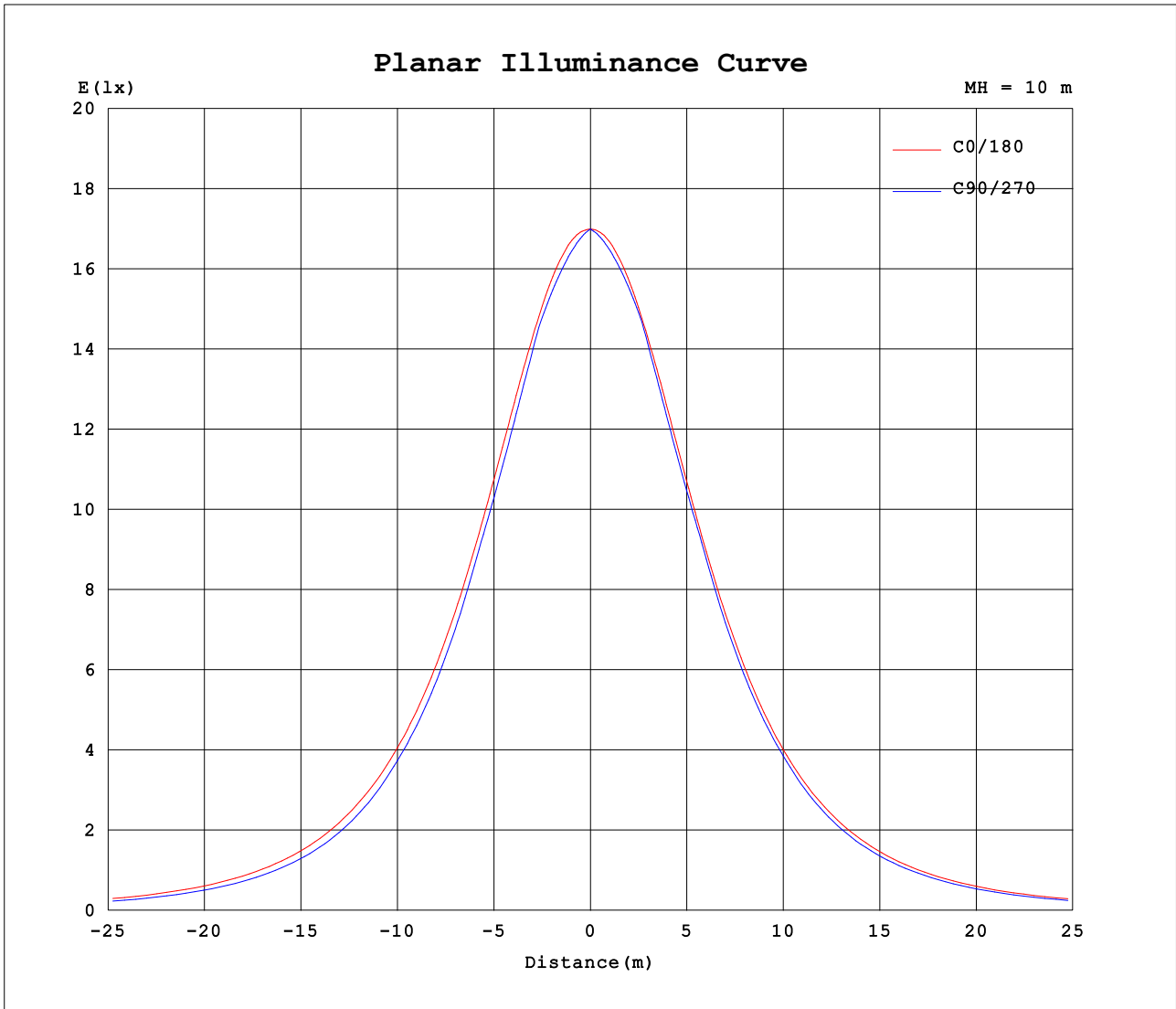
AvgL	cd/m2
L_0~180 (65) av	10121
L_0~180 (75) av	9774
L_0~180 (85) av	12122
L_90~270 (65) av	8623
L_90~270 (75) av	7023
L_90~270 (85) av	0
L_45 (65) av	9605
L_45 (75) av	9004
L_45 (85) av	0

Standard: GB/T 29293-2012

H(β) Range:-90 - 90DEG
H(β) Interval: 1.0DEG
Test Speed: HIGH
Temperature:25.3DEG
Operators:
Test Date:04 December 2023

V(B) Range:-75 - 75DEG
V(B) Interval: 5.0DEG
Test System:EVERFINE GO-2000A_V1 SYSTEM V2.0.366
Humidity:65.0%
Test Distance:7.500m [K=1.0667]
Remarks: TÜV RHEINLAND

Planar Illuminance Curve



H(β) Range:-90 - 90DEG
H(β) Interval: 1.0DEG
Test Speed: HIGH
Temperature:25.3DEG
Operators:
Test Date:04 December 2023

V(B) Range:-75 - 75DEG
V(B) Interval: 5.0DEG
Test System:EVERFINE GO-2000A_V1 SYSTEM V2.0.366
Humidity:65.0%
Test Distance:7.500m [K=1.0667]
Remarks: TÜV RHEINLAND

LUMINOUS DISTRIBUTION INTENSITY DATA

Test:U:220.15V I:0.2134A P:38.825W PF:0.9619 Freq:49.99Hz Lamp Flux:4749.6x1 lm		
NAME: GLM-PLS128C	TYPE:LED	WEIGHT:
SPEC.:	DIM.:	SERIAL No.:1
MFR.: EVERFINE	SUR.:	Shielding Angle:

Table--2

UNIT: cd

C (DEG) γ (DEG)	95	100	105	110	115	120	125	130	135	140	145	150	155	160	165	170	175	180	185
0	1700	1700	1700	1700	1700	1700	1700	1700	1700	1700	1700	1700	1700	1700	1700	1700	1700	1700	1700
5	1671	1671	1671	1672	1673	1673	1674	1676	1677	1678	1680	1682	1683	1685	1687	1690	1692	1694	1692
10	1642	1642	1643	1644	1644	1645	1646	1647	1648	1649	1651	1653	1655	1658	1661	1665	1669	1674	1670
15	1613	1614	1614	1614	1614	1613	1612	1612	1612	1612	1612	1613	1615	1618	1621	1625	1631	1637	1632
20	1539	1541	1544	1547	1551	1555	1561	1567	1569	1566	1564	1563	1563	1564	1566	1571	1577	1586	1579
25	1464	1466	1468	1471	1474	1477	1481	1486	1492	1499	1508	1503	1499	1498	1499	1503	1509	1519	1511
30	1388	1391	1392	1394	1395	1397	1399	1401	1405	1410	1416	1425	1427	1422	1420	1422	1428	1438	1430
35	1280	1284	1289	1294	1301	1308	1315	1314	1315	1316	1320	1325	1335	1336	1331	1331	1336	1347	1338
40	1171	1175	1179	1184	1190	1196	1202	1210	1219	1220	1219	1221	1227	1237	1234	1231	1235	1245	1237
45	1062	1066	1070	1075	1079	1084	1088	1093	1099	1107	1117	1113	1115	1121	1130	1123	1125	1135	1127
50	931	937	944	951	960	968	975	978	981	985	991	1001	1000	1001	1010	1010	1008	1017	1010
55	800	806	813	820	828	836	845	854	863	865	867	872	880	880	883	892	886	894	888
60	669	675	682	690	698	705	712	720	727	736	746	745	748	756	755	764	759	766	761
65	533	540	549	557	566	574	582	589	595	601	605	613	608	605	627	626	631	635	632
70	397	405	414	424	433	442	451	459	465	467	460	455	444	435	453	465	503	502	504
75	262	270	280	291	301	312	322	331	339	337	324	307	296	287	283	289	356	374	375
80	1.95	7.98	18.4	33.6	53.6	78.8	109	145	186	213	205	196	187	176	179	173	180	255	255
85	0.00	0.00	0.00	0.00	0.00	0.00	0.00	0.00	0.00	0.00	0.00	0.00	41.3	96.7	116	120	116	153	157
90	0.00	0.00	0.00	0.00	0.00	0.00	0.00	0.00	0.00	0.00	0.00	0.00	0.00	0.00	0.00	0.00	0.00	80.3	0.00

H(β) Range:-90 - 90DEG
H(β) Interval: 1.0DEG
Test Speed: HIGH
Temperature:25.3DEG
Operators:
Test Date:04 December 2023

V(B) Range:-75 - 75DEG
V(B) Interval: 5.0DEG
Test System:EVERFINE GO-2000A_V1 SYSTEM V2.0.366
Humidity:65.0%
Test Distance:7.500m [K=1.0667]
Remarks: TÜV RHEINLAND

LUMINOUS DISTRIBUTION INTENSITY DATA

Test:U:220.15V I:0.2134A P:38.825W PF:0.9619 Freq:49.99Hz Lamp Flux:4749.6x1 lm		
NAME: GLM-PLS128C	TYPE:LED	WEIGHT:
SPEC.:	DIM.:	SERIAL No.:1
MFR.: EVERFINE	SUR.:	Shielding Angle:

Table--3

UNIT: cd

C (DEG) γ (DEG)	190	195	200	205	210	215	220	225	230	235	240	245	250	255	260	265	270	275	280
0	1700	1700	1700	1700	1700	1700	1700	1700	1700	1700	1700	1700	1700	1700	1700	1700	1700	1700	1700
5	1691	1689	1687	1685	1684	1683	1681	1680	1679	1678	1678	1677	1676	1676	1676	1676	1676	1676	1676
10	1667	1664	1661	1659	1657	1656	1655	1655	1654	1654	1653	1653	1653	1652	1652	1652	1652	1652	1652
15	1628	1625	1622	1621	1620	1620	1621	1622	1623	1624	1625	1626	1627	1628	1628	1628	1628	1628	1628
20	1574	1571	1570	1570	1572	1574	1578	1582	1581	1576	1571	1567	1564	1561	1559	1557	1556	1557	1559
25	1506	1505	1505	1508	1513	1520	1513	1507	1502	1499	1495	1493	1491	1489	1487	1485	1485	1486	1488
30	1426	1426	1430	1437	1437	1430	1425	1421	1420	1419	1418	1417	1417	1416	1415	1414	1413	1414	1417
35	1335	1338	1345	1345	1338	1334	1332	1332	1335	1337	1331	1325	1320	1315	1311	1307	1306	1308	1312
40	1236	1241	1246	1238	1234	1235	1237	1239	1231	1226	1221	1216	1212	1208	1204	1200	1198	1201	1205
45	1128	1137	1130	1126	1127	1133	1126	1120	1117	1113	1110	1107	1104	1101	1097	1093	1091	1094	1098
50	1014	1017	1011	1012	1015	1008	1005	1003	1002	1002	997	989	983	976	970	965	962	965	971
55	896	889	889	892	886	884	885	887	879	873	866	860	853	847	841	835	832	836	842
60	767	761	766	760	760	764	758	752	746	742	737	731	725	718	712	706	703	707	713
65	632	634	631	632	632	628	624	620	617	612	606	599	591	583	575	569	565	570	576
70	501	501	504	502	498	496	494	490	485	479	472	464	455	447	438	431	427	432	439
75	374	377	374	373	372	370	366	361	355	347	339	330	320	311	301	294	289	294	301
80	258	257	257	257	254	250	243	203	158	120	86.7	59.3	37.2	20.5	8.93	2.19	0.00	2.19	8.93
85	158	159	140	61.0	0.00	0.00	0.00	0.00	0.00	0.00	0.00	0.00	0.00	0.00	0.00	0.00	0.00	0.00	0.00
90	0.00	0.00	0.00	0.00	0.00	0.00	0.00	0.00	0.00	0.00	0.00	0.00	0.00	0.00	0.00	0.00	0.00	0.00	0.00

H(β) Range:-90 - 90DEG
H(β) Interval: 1.0DEG
Test Speed: HIGH
Temperature:25.3DEG
Operators:
Test Date:04 December 2023

V(B) Range:-75 - 75DEG
V(B) Interval: 5.0DEG
Test System:EVERFINE GO-2000A_V1 SYSTEM V2.0.366
Humidity:65.0%
Test Distance:7.500m [K=1.0667]
Remarks: TÜV RHEINLAND

LUMINOUS DISTRIBUTION INTENSITY DATA

Test:U:220.15V I:0.2134A P:38.825W PF:0.9619 Freq:49.99Hz Lamp Flux:4749.6x1 lm		
NAME: GLM-PLS128C	TYPE:LED	WEIGHT:
SPEC.:	DIM.:	SERIAL No.:1
MFR.: EVERFINE	SUR.:	Shielding Angle:

Table--4

UNIT: cd

C (DEG) γ (DEG)	285	290	295	300	305	310	315	320	325	330	335	340	345	350	355				
0	1700	1700	1700	1700	1700	1700	1700	1700	1700	1700	1700	1700	1700	1700	1700				
5	1676	1676	1677	1678	1679	1680	1681	1682	1684	1685	1686	1688	1690	1691	1693				
10	1653	1653	1654	1655	1655	1656	1657	1657	1658	1660	1662	1664	1667	1670	1673				
15	1629	1629	1628	1627	1626	1625	1624	1623	1623	1623	1624	1626	1628	1632	1637				
20	1562	1565	1569	1573	1578	1583	1585	1581	1578	1575	1574	1574	1576	1579	1584				
25	1491	1493	1496	1499	1502	1505	1510	1516	1523	1517	1513	1510	1510	1512	1518				
30	1418	1420	1421	1422	1423	1424	1426	1429	1434	1441	1441	1435	1432	1433	1438				
35	1317	1323	1329	1336	1342	1340	1339	1338	1340	1344	1351	1351	1344	1343	1347				
40	1210	1214	1219	1224	1230	1237	1245	1245	1242	1241	1244	1252	1248	1243	1246				
45	1102	1106	1110	1113	1117	1121	1126	1133	1141	1136	1133	1137	1144	1136	1137				
50	977	984	991	999	1004	1005	1007	1010	1016	1025	1021	1019	1024	1022	1020				
55	848	855	861	868	875	881	888	889	890	894	902	899	898	903	898				
60	719	726	732	738	744	749	754	760	766	764	767	776	771	774	771				
65	584	592	600	607	614	619	622	626	630	635	636	638	645	640	641				
70	447	455	464	472	479	485	491	495	498	500	503	506	507	509	510				
75	310	319	329	337	346	353	359	365	369	372	374	375	378	380	380				
80	20.5	37.1	58.9	86.1	118	156	200	239	245	251	254	256	257	259	261				
85	0.00	0.00	0.00	0.00	0.00	0.00	0.00	0.00	0.00	0.00	0.00	59.0	134	154	155	158			
90	0.00	0.00	0.00	0.00	0.00	0.00	0.00	0.00	0.00	0.00	0.00	0.00	0.00	0.00	0.00				

H(β) Range:-90 - 90DEG
H(β) Interval: 1.0DEG
Test Speed: HIGH
Temperature:25.3DEG
Operators:
Test Date:04 December 2023

V(B) Range:-75 - 75DEG
V(B) Interval: 5.0DEG
Test System:EVERFINE GO-2000A_V1 SYSTEM V2.0.366
Humidity:65.0%
Test Distance:7.500m [K=1.0667]
Remarks: TÜV RHEINLAND