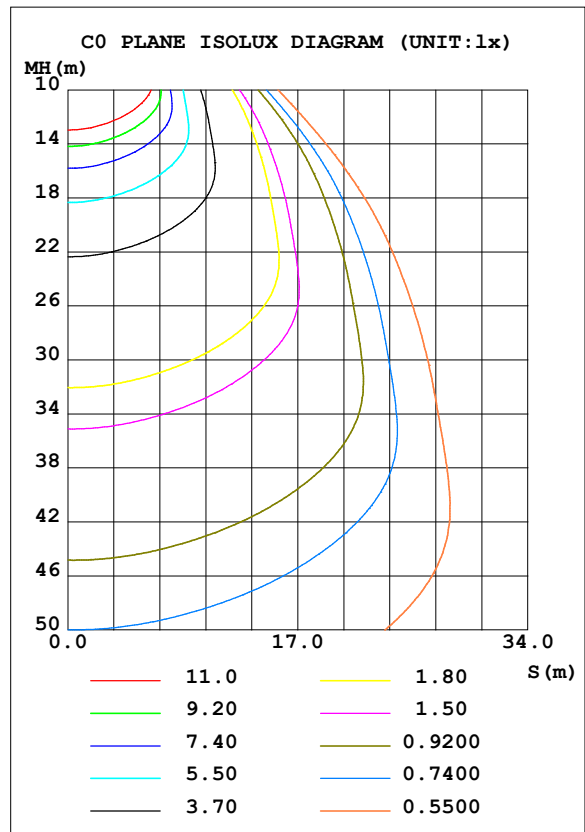
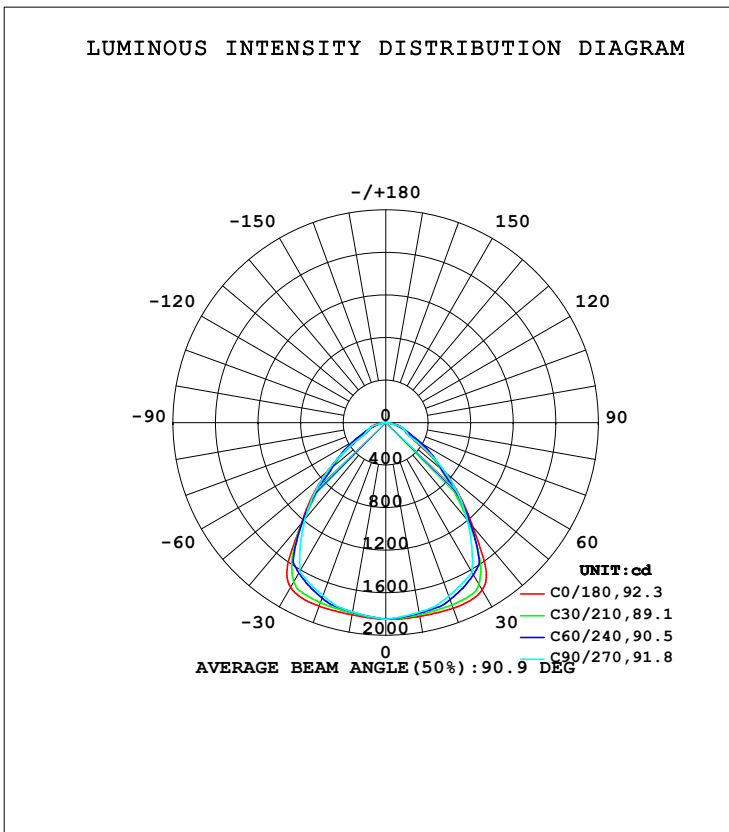


LUMINAIRE PHOTOMETRIC TEST REPORT

Test:U:220.13V I:0.1193A P:25.403W PF:0.9670 Freq:49.99Hz Lamp Flux:3962.62x1 lm		
NAME: GLM-SPL6262-25W	TYPE:LED	WEIGHT:
SPEC.:	DIM.:	SERIAL No.:1
MFR.: EVERFINE	SUR.:	Shielding Angle:

DATA OF LAMP		PHOTOMETRIC DATA Eff: 155.99 lm/W			
MODEL		I _{max} (cd)	1856	S/MH (C0/180)	1.28
NOMINAL POWER (W)		LOR (%)	100.0	S/MH (C90/270)	1.26
RATED VOLTAGE (V)	220.0	TOTAL FLUX (lm)	3962.6	<input type="checkbox"/> UP, DN (C0-180)	0.0, 50.3
NOMINAL FLUX (lm)	3962.62	CIE CLASS	DIRECT	<input type="checkbox"/> UP, DN (C180-360)	0.0, 49.7
LAMPS INSIDE	1	<input type="checkbox"/> up (%)	0.0	CIBSE SHR NOM	1.25
TEST VOLTAGE (V)	220	<input type="checkbox"/> down (%)	100.0	CIBSE SHR MAX	1.30



H(□) Range:-90 - 90DEG
H(□) Interval: 1.0DEG
Test Speed: HIGH
Temperature:25.3DEG
Operators:
Test Date:2022-10-28

V(B) Range:-75 - 75DEG
V(B) Interval: 5.0DEG
Test System:EVERFINE GO-2000A_V1 SYSTEM V2.0.366
Humidity:65.0%
Test Distance:7.500m [K=1.0667]
Remarks:

ZONAL FLUX DIAGRAM

ZONAL FLUX DIAGRAM:

mm	C0	C45	C90	C135	C180	C225	C270	C315	mm	□ zone	□ total	%lum, lamp
10	1849	1825	1810	1814	1835	1812	1807	1822	0- 10	174.7	174.7	4.41,4.41
20	1856	1807	1735	1788	1836	1786	1731	1799	10- 20	511.7	686.4	17.3,17.3
30	1816	1671	1625	1654	1789	1651	1620	1664	20- 30	807.5	1494	37.7,37.7
40	1273	1230	1192	1234	1235	1240	1180	1250	30- 40	931.2	2425	61.2,61.2
50	732.8	668.7	734.1	674.6	723.1	669.5	718.9	677.5	40- 50	726.7	3152	79.5,79.5
60	263.8	303.0	252.2	313.3	257.6	297.1	235.5	297.0	50- 60	443.6	3595	90.7,90.7
70	180.0	105.8	183.4	107.4	165.6	84.26	163.7	86.51	60- 70	234.0	3829	96.6,96.6
80	74.10	75.46	0	71.27	75.35	46.71	0	52.68	70- 80	122.6	3952	99.7,99.7
90	0	0	0	0	0	0	0	0	80- 90	10.70	3963	100,100
100									90-100			
110									100-110			
120									110-120			
130									120-130			
140									130-140			
150									140-150			
160									150-160			
170									160-170			
180									170-180			
DEG	LUMINOUS INTENSITY:cd									UNIT:lm		

Conical surface Flux(90deg): 2823.6 lm

%lum = 71.3%

%lamp = 71.3%

Conical surface Flux(120deg): 3595.4 lm

%lum = 90.7%

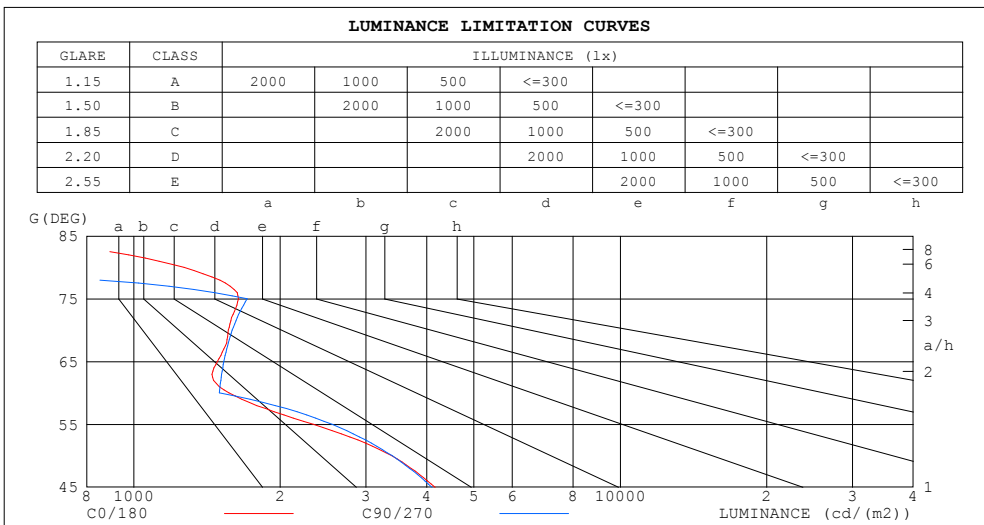
%lamp = 90.7%

H(□) Range:-90 - 90DEG
H(□) Interval: 1.0DEG
Test Speed: HIGH
Temperature:25.3DEG
Operators:
Test Date:2022-10-28

V(B) Range:-75 - 75DEG
V(B) Interval: 5.0DEG
Test System:EVERFINE GO-2000A_V1 SYSTEM V2.0.366
Humidity:65.0%
Test Distance:7.500m [K=1.0667]
Remarks:

LUMINANCE LIMITATION CURVES

Test:U:220.13V I:0.1193A P:25.403W PF:0.9670 Freq:49.99Hz Lamp Flux:3962.62x1 lm		
NAME: GLM-SPL6262-25W	TYPE:LED	WEIGHT:
SPEC.:	DIM.:	SERIAL No.:1
MFR.: EVERFINE	SUR.:	Shielding Angle:



LUMINANCE cd/(m2)		
G (DEG)	C0/180	C90/270
85	221	0
80	1269	0
75	1641	1711
70	1564	1594
65	1486	1532
60	1568	1499
55	2335	2556
50	3389	3395
45	4164	4099

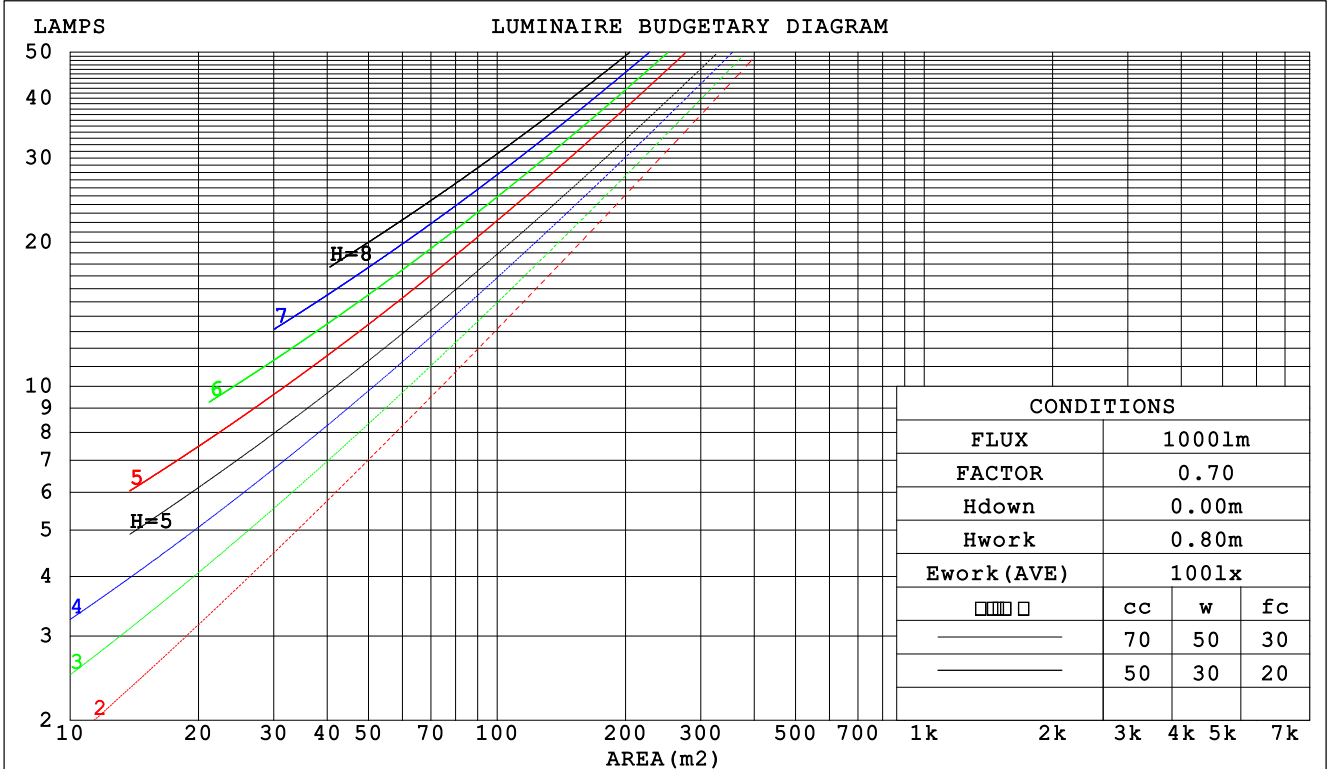
H(□) Range:-90 - 90DEG
H(□) Interval: 1.0DEG
Test Speed: HIGH
Temperature:25.3DEG
Operators:
Test Date:2022-10-28

V(B) Range:-75 - 75DEG
V(B) Interval: 5.0DEG
Test System:EVERFINE GO-2000A_V1 SYSTEM V2.0.366
Humidity:65.0%
Test Distance:7.500m [K=1.0667]
Remarks:

CU AND LUMINAIRE BUDGETARY ESTIMATE DIAGRAM

Test:U:220.13V I:0.1193A P:25.403W PF:0.9670 Freq:49.99Hz Lamp Flux:3962.62x1 lm		
NAME: GLM-SPL6262-25W	TYPE:LED	WEIGHT:
SPEC.:	DIM.:	SERIAL No.:1
MFR.: EVERFINE	SUR.:	Shielding Angle:

□cc	80%			70%			50%			30%			10%			0
□w	50%	30%	10%	50%	30%	10%	50%	30%	10%	50%	30%	10%	50%	30%	10%	0
□fc	20%			20%			20%			20%			20%			0
RCR	RCR:Room Cavity Ratio						Coefficients of Utilization(CU)									
0.0	1.19	1.19	1.19	1.16	1.16	1.16	1.11	1.11	1.11	1.06	1.06	1.06	1.02	1.02	1.02	1.00
1.0	1.07	1.04	1.01	1.05	1.02	.99	1.01	.98	.96	.97	.95	.93	.93	.92	.90	.88
2.0	.96	.90	.85	.94	.89	.84	.91	.86	.83	.87	.84	.81	.85	.82	.79	.77
3.0	.86	.79	.74	.84	.78	.73	.82	.76	.72	.79	.74	.70	.77	.73	.69	.67
4.0	.78	.70	.64	.76	.69	.64	.74	.68	.63	.72	.66	.62	.70	.65	.61	.59
5.0	.70	.62	.57	.69	.62	.56	.67	.61	.56	.65	.60	.55	.64	.59	.55	.53
6.0	.64	.56	.50	.63	.56	.50	.61	.55	.50	.60	.54	.49	.58	.53	.49	.47
7.0	.59	.51	.45	.58	.50	.45	.56	.50	.45	.55	.49	.44	.54	.48	.44	.42
8.0	.54	.46	.41	.53	.46	.41	.52	.45	.40	.51	.45	.40	.50	.44	.40	.38
9.0	.50	.42	.37	.49	.42	.37	.48	.41	.37	.47	.41	.37	.46	.40	.36	.35
10.0	.46	.39	.34	.45	.38	.34	.45	.38	.34	.44	.38	.33	.43	.37	.33	.32



H(□) Range:-90 - 90DEG
H(□) Interval: 1.0DEG
Test Speed: HIGH
Temperature:25.3DEG
Operators:
Test Date:2022-10-28

V(B) Range:-75 - 75DEG
V(B) Interval: 5.0DEG
Test System:EVERFINE GO-2000A_V1 SYSTEM V2.0.366
Humidity:65.0%
Test Distance:7.500m [K=1.0667]
Remarks:

WEC AND CCEC

Test:U:220.13V I:0.1193A P:25.403W PF:0.9670 Freq:49.99Hz Lamp Flux:3962.62x1 lm		
NAME: GLM-SPL6262-25W	TYPE:LED	WEIGHT:
SPEC.:	DIM.:	SERIAL No.:1
MFR.: EVERFINE	SUR.:	Shielding Angle:

<input type="checkbox"/> cc	80%	70%	50%	30%	10%	0
<input type="checkbox"/> w	50% 30% 10%	50% 30% 10%	50% 30% 10%	50% 30% 10%	50% 30% 10%	0
<input type="checkbox"/> fc	20%	20%	20%	20%	20%	0
RCR	RCR:Room Cavity Ratio		Wall Exitance Coefficients (WEC)			
0.0						
1.0	.247 .141 .045	.240 .137 .044	.227 .130 .042	.216 .124 .040	.205 .119 .038	
2.0	.240 .132 .040	.234 .129 .040	.223 .124 .038	.212 .119 .037	.203 .115 .036	
3.0	.227 .121 .036	.222 .119 .036	.212 .115 .035	.203 .111 .034	.195 .108 .033	
4.0	.214 .111 .033	.209 .110 .032	.201 .107 .032	.193 .104 .031	.185 .101 .031	
5.0	.201 .103 .030	.197 .101 .029	.190 .099 .029	.182 .096 .029	.176 .094 .028	
6.0	.189 .095 .027	.186 .094 .027	.179 .092 .027	.173 .090 .026	.167 .088 .026	
7.0	.178 .088 .025	.175 .087 .025	.169 .086 .025	.163 .084 .024	.158 .082 .024	
8.0	.169 .082 .023	.166 .082 .023	.160 .080 .023	.155 .079 .023	.150 .077 .022	
9.0	.159 .077 .022	.157 .076 .021	.152 .075 .021	.147 .074 .021	.143 .073 .021	
10.0	.151 .072 .020	.149 .072 .020	.144 .071 .020	.140 .070 .020	.136 .068 .020	

<input type="checkbox"/> cc	80%	70%	50%	30%	10%	0
<input type="checkbox"/> w	50% 30% 10%	50% 30% 10%	50% 30% 10%	50% 30% 10%	50% 30% 10%	0
<input type="checkbox"/> fc	20%	20%	20%	20%	20%	0
RCR	RCR:Room Cavity Ratio		Ceiling Cavity Exitance Coefficients (CCEC)			
0.0	.190 .190 .190	.163 .163 .163	.111 .111 .111	.064 .064 .064	.020 .020 .020	
1.0	.176 .157 .139	.151 .134 .120	.103 .093 .083	.059 .054 .048	.019 .017 .016	
2.0	.165 .132 .104	.142 .114 .090	.097 .079 .063	.056 .046 .037	.018 .015 .012	
3.0	.156 .114 .080	.134 .098 .070	.092 .068 .049	.053 .040 .029	.017 .013 .009	
4.0	.148 .100 .064	.127 .087 .055	.087 .060 .039	.051 .035 .023	.016 .012 .008	
5.0	.141 .089 .051	.121 .077 .045	.083 .054 .032	.048 .032 .019	.016 .010 .006	
6.0	.134 .081 .043	.115 .070 .037	.079 .049 .026	.046 .029 .016	.015 .009 .005	
7.0	.128 .074 .036	.110 .064 .031	.076 .045 .022	.044 .026 .013	.014 .009 .004	
8.0	.122 .068 .031	.105 .059 .027	.073 .041 .019	.042 .024 .011	.014 .008 .004	
9.0	.116 .063 .027	.100 .055 .023	.069 .038 .017	.040 .023 .010	.013 .007 .003	
10.0	.111 .059 .024	.096 .051 .021	.067 .036 .015	.039 .021 .009	.013 .007 .003	

H(□) Range:-90 - 90DEG
H(□) Interval: 1.0DEG
Test Speed: HIGH
Temperature:25.3DEG
Operators:
Test Date:2022-10-28

V(B) Range:-75 - 75DEG
V(B) Interval: 5.0DEG
Test System:EVERFINE GO-2000A_V1 SYSTEM V2.0.366
Humidity:65.0%
Test Distance:7.500m [K=1.0667]
Remarks:

UGR(Unified Glare Rating) Table

Test:U:220.13V I:0.1193A P:25.403W PF:0.9670 Freq:49.99Hz Lamp Flux:3962.62x1 lm										
NAME: GLM-SPL6262-25W					TYPE:LED			WEIGHT:		
SPEC.:					DIM.:			SERIAL No.:1		
MFR.: EVERFINE					SUR.:			Shielding Angle:		
ceiling/cavity	0.7	0.7	0.5	0.5	0.3	0.7	0.7	0.5	0.5	0.3
walls	0.5	0.3	0.5	0.3	0.3	0.5	0.3	0.5	0.3	0.3
working plane	0.2	0.2	0.2	0.2	0.2	0.2	0.2	0.2	0.2	0.2
Room dimensions	Viewed crosswise					Viewed endwise				
x = 2H y = 2H	15.4	16.7	15.6	16.9	17.1	15.8	17.1	16.0	17.3	17.5
3H	16.1	17.4	16.4	17.6	17.8	16.5	17.8	16.8	18.0	18.2
4H	16.5	17.6	16.8	17.9	18.1	16.9	18.1	17.2	18.3	18.6
6H	16.7	17.8	17.0	18.0	18.3	16.9	18.0	17.3	18.3	18.6
8H	16.7	17.7	17.0	18.0	18.3	16.9	17.9	17.2	18.2	18.5
12H	16.6	17.6	17.0	17.9	18.2	16.8	17.8	17.2	18.1	18.4
4H 2H	15.5	16.6	15.8	16.9	17.1	15.8	17.0	16.1	17.2	17.4
3H	16.4	17.4	16.8	17.7	18.0	16.8	17.8	17.2	18.1	18.4
4H	16.9	17.8	17.3	18.1	18.5	17.4	18.3	17.8	18.6	18.9
6H	17.3	18.1	17.6	18.4	18.8	17.5	18.3	17.9	18.6	19.0
8H	17.3	18.0	17.7	18.4	18.8	17.4	18.2	17.8	18.5	18.9
12H	17.3	17.9	17.7	18.3	18.7	17.4	18.1	17.8	18.4	18.8
8H 4H	17.0	17.8	17.4	18.1	18.5	17.4	18.2	17.9	18.5	18.9
6H	17.4	18.0	17.9	18.4	18.9	17.6	18.2	18.0	18.6	19.0
8H	17.5	18.1	18.0	18.5	18.9	17.5	18.1	18.0	18.5	18.9
12H	17.5	18.0	18.0	18.4	18.9	17.5	17.9	18.0	18.4	18.9
12H 4H	17.0	17.7	17.4	18.0	18.4	17.4	18.1	17.9	18.5	18.9
6H	17.4	18.0	17.9	18.4	18.8	17.6	18.1	18.0	18.5	19.0
8H	17.5	18.0	18.0	18.4	18.9	17.5	18.0	18.0	18.4	18.9
Variations with the observer position at spacings:										
S = 1.0H	+ 0.6 / - 0.8					+ 0.6 / - 0.7				
1.5H	+ 0.5 / - 0.5					+ 0.3 / - 0.6				
2.0H	+ 1.6 / - 1.7					+ 1.2 / - 2.4				

CIE Pub.117, 3963 lm Total Lamp Luminous Flux Corrected (8log(F/F0) = 4.8)

H(□) Range:-90 - 90DEG
H(□) Interval: 1.0DEG
Test Speed: HIGH
Temperature:25.3DEG
Operators:
Test Date:2022-10-28

V(B) Range:-75 - 75DEG
V(B) Interval: 5.0DEG
Test System:EVERFINE GO-2000A_V1 SYSTEM V2.0.366
Humidity:65.0%
Test Distance:7.500m [K=1.0667]
Remarks:

UTILIZATION FACTORS TABLE

Test:U:220.13V I:0.1193A P:25.403W PF:0.9670 Freq:49.99Hz Lamp Flux:3962.62x1 lm		
NAME: GLM-SPL6262-25W	TYPE:LED	WEIGHT:
SPEC.:	DIM.:	SERIAL No.:1
MFR.: EVERFINE	SUR.:	Shielding Angle:

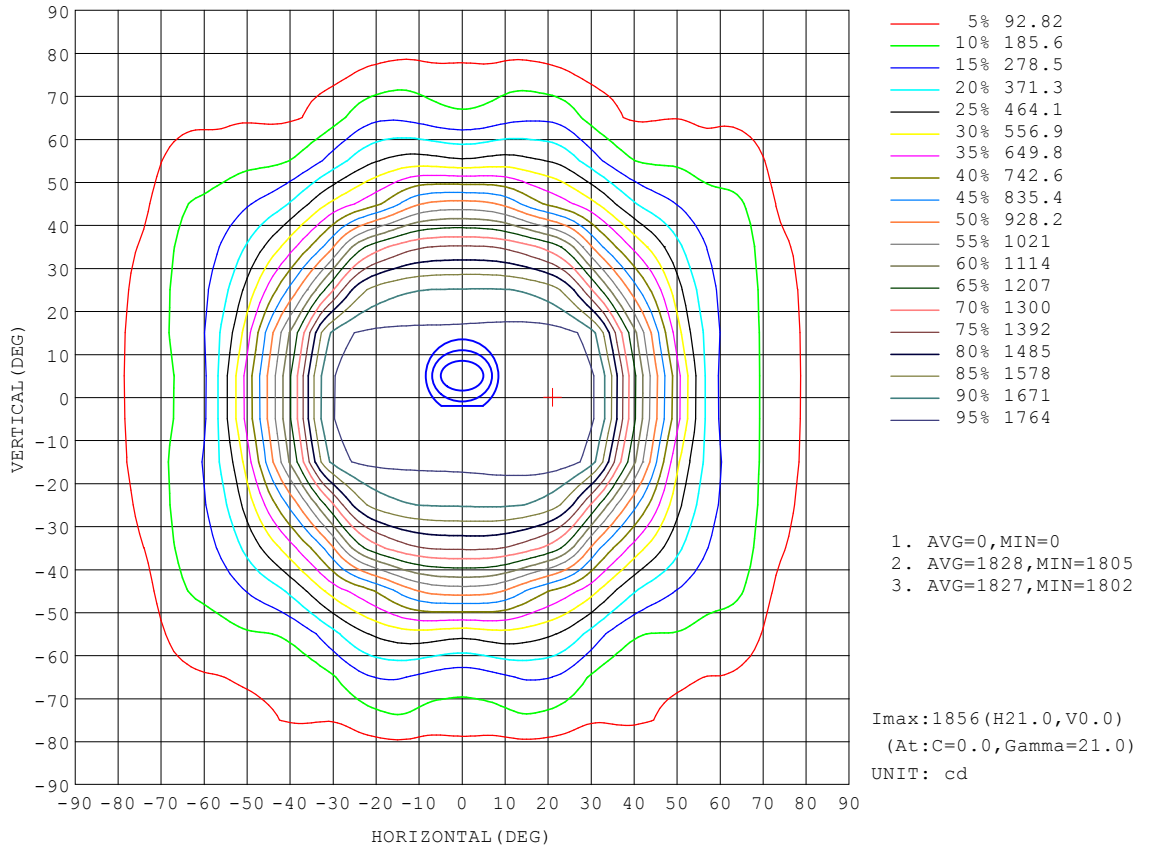
REFLECTANCE										
Ceiling	0.8	0.8	0.8	0.7	0.7	0.7	0.5	0.5	0.5	0
Walls	0.7	0.5	0.3	0.7	0.5	0.3	0.7	0.5	0.3	0
Working plane	0.2	0.2	0.2	0.2	0.2	0.2	0.2	0.2	0.2	0
ROOM INDEX	UTILIZATION FACTORS (PERCENT) $k(RI) \times RCR = 5$									
k = 0.60	67	57	51	66	57	51	65	57	51	45
0.80	77	67	61	76	67	61	75	66	61	55
1.00	85	76	70	84	75	70	82	76	69	63
1.25	91	83	77	90	82	77	87	81	76	70
1.50	95	88	82	94	87	82	91	85	81	74
2.00	101	94	89	99	93	88	96	91	87	80
2.50	104	98	93	102	96	92	98	94	90	83
3.00	106	101	97	104	100	96	101	97	94	86
4.00	110	105	102	107	103	100	103	100	97	89
5.00	111	108	104	109	106	103	105	102	100	91
ROOM INDEX	UF(total)									Direct
According to DIN EN 13032-2 2004			Suspended				SHRNOM = 1.25			

H(□) Range:-90 - 90DEG
H(□) Interval: 1.0DEG
Test Speed: HIGH
Temperature:25.3DEG
Operators:
Test Date:2022-10-28

V(B) Range:-75 - 75DEG
V(B) Interval: 5.0DEG
Test System:EVERFINE GO-2000A_V1 SYSTEM V2.0.366
Humidity:65.0%
Test Distance:7.500m [K=1.0667]
Remarks:

ISOCANDELA DIAGRAM

Test:U:220.13V I:0.1193A P:25.403W PF:0.9670 Freq:49.99Hz Lamp Flux:3962.62x1 lm		
NAME: GLM-SPL6262-25W	TYPE:LED	WEIGHT:
SPEC.:	DIM.:	SERIAL No.:1
MFR.: EVERFINE	SUR.:	Shielding Angle:

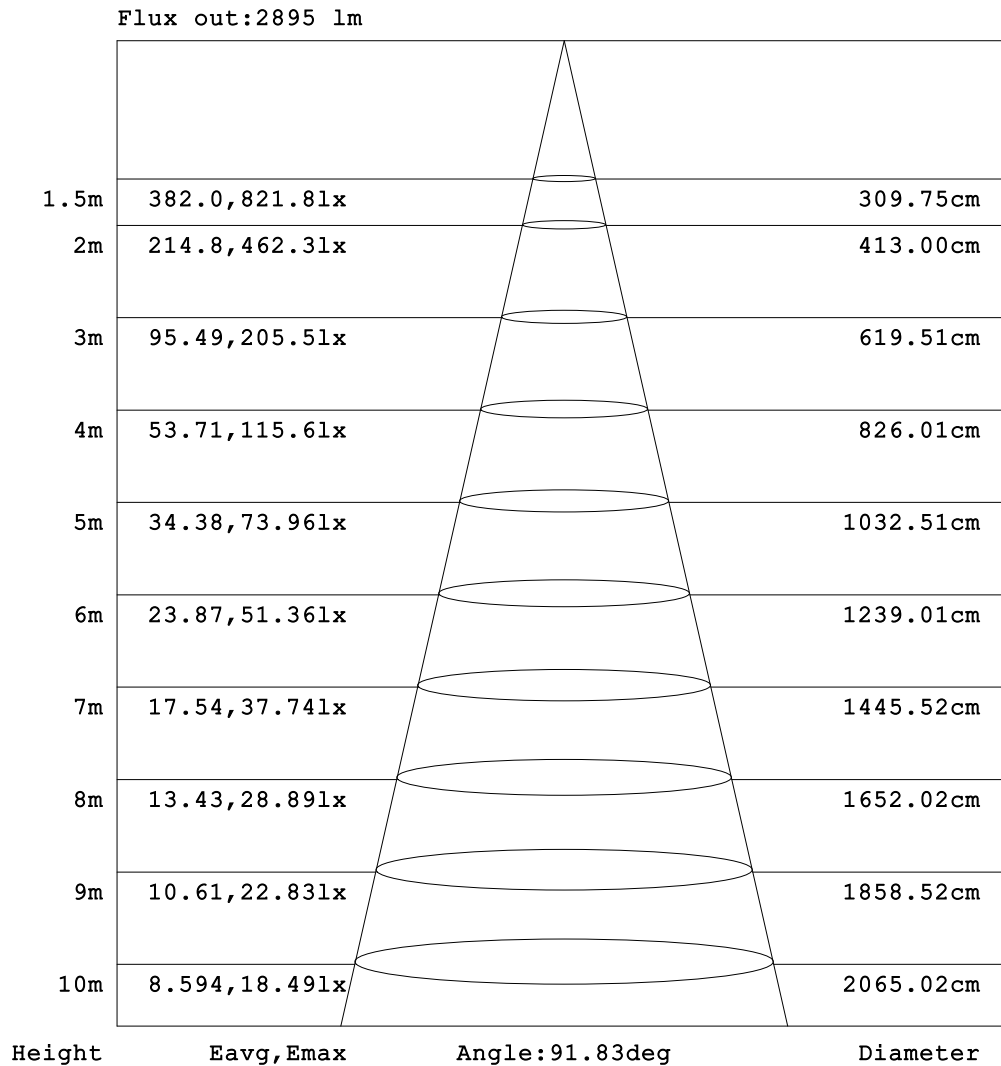


H(□) Range:-90 - 90DEG
 H(□) Interval: 1.0DEG
 Test Speed: HIGH
 Temperature:25.3DEG
 Operators:
 Test Date:2022-10-28

V(B) Range:-75 - 75DEG
 V(B) Interval: 5.0DEG
 Test System:EVERFINE GO-2000A_V1 SYSTEM V2.0.366
 Humidity:65.0%
 Test Distance:7.500m [K=1.0667]
 Remarks:

AAI Figure

Test:U:220.13V I:0.1193A P:25.403W PF:0.9670 Freq:49.99Hz Lamp Flux:3962.62x1 lm		
NAME: GLM-SPL6262-25W	TYPE:LED	WEIGHT:
SPEC.:	DIM.:	SERIAL No.:1
MFR.: EVERFINE	SUR.:	Shielding Angle:



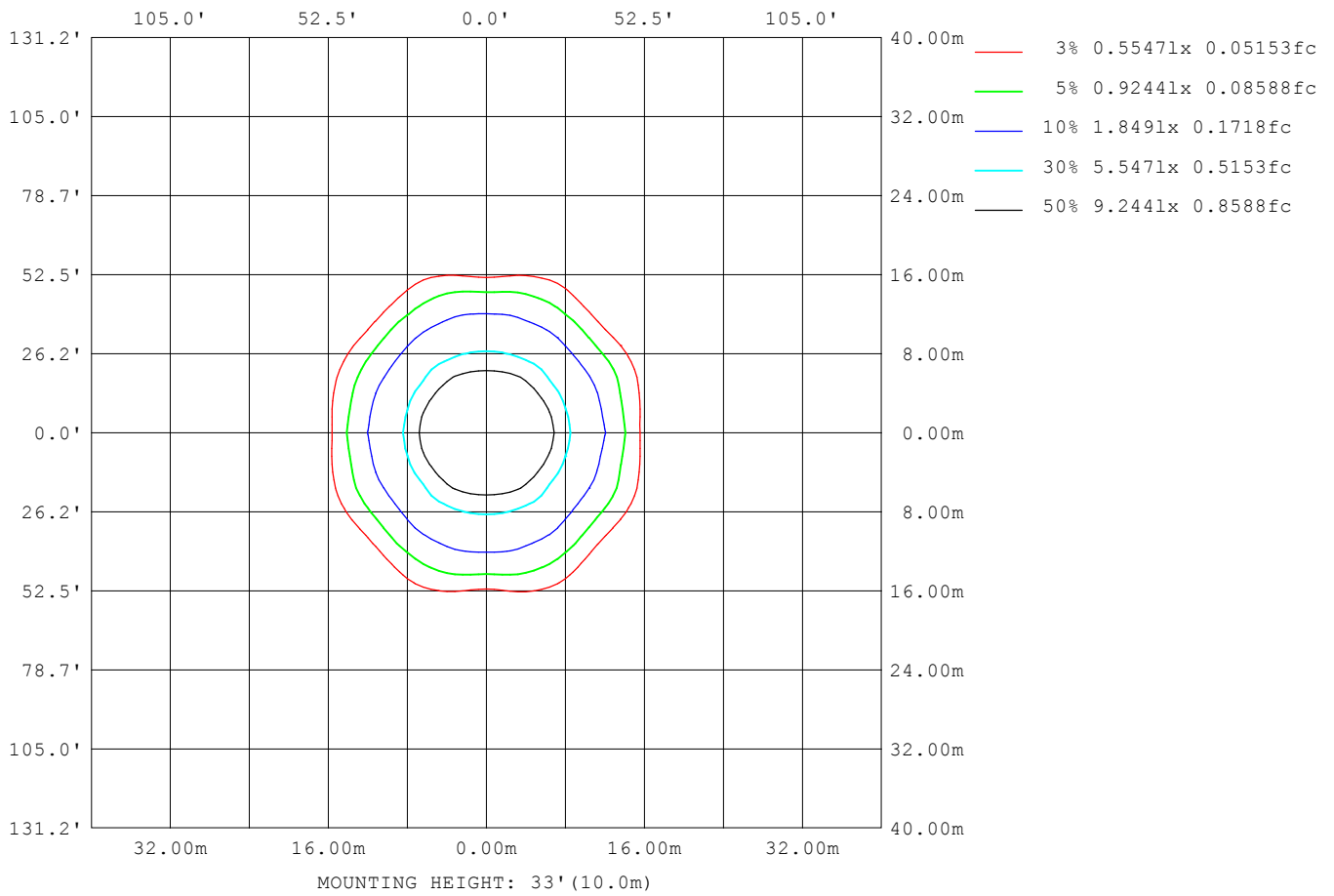
Note:The Curves indicate the illuminated area and the average illumination when the luminaire is at different distance.

H(□) Range:-90 - 90DEG
H(□) Interval: 1.0DEG
Test Speed: HIGH
Temperature:25.3DEG
Operators:
Test Date:2022-10-28

V(B) Range:-75 - 75DEG
V(B) Interval: 5.0DEG
Test System:EVERFINE GO-2000A_V1 SYSTEM V2.0.366
Humidity:65.0%
Test Distance:7.500m [K=1.0667]
Remarks:

ISOLUX DIAGRAM

Test:U:220.13V I:0.1193A P:25.403W PF:0.9670 Freq:49.99Hz Lamp Flux:3962.62x1 lm		
NAME: GLM-SPL6262-25W	TYPE:LED	WEIGHT:
SPEC.:	DIM.:	SERIAL No.:1
MFR.: EVERFINE	SUR.:	Shielding Angle:



H(□) Range:-90 - 90DEG
 H(□) Interval: 1.0DEG
 Test Speed: HIGH
 Temperature:25.3DEG
 Operators:
 Test Date:2022-10-28

V(B) Range:-75 - 75DEG
 V(B) Interval: 5.0DEG
 Test System:EVERFINE GO-2000A_V1 SYSTEM V2.0.366
 Humidity:65.0%
 Test Distance:7.500m [K=1.0667]
 Remarks:

LED Avg.L Report

Test:U:220.13V I:0.1193A P:25.403W PF:0.9670 Freq:49.99Hz Lamp Flux:3962.62x1 lm		
NAME: GLM-SPL6262-25W	TYPE:LED	WEIGHT:
SPEC.:	DIM.:	SERIAL No.:1
MFR.: EVERFINE	SUR.:	Shielding Angle:

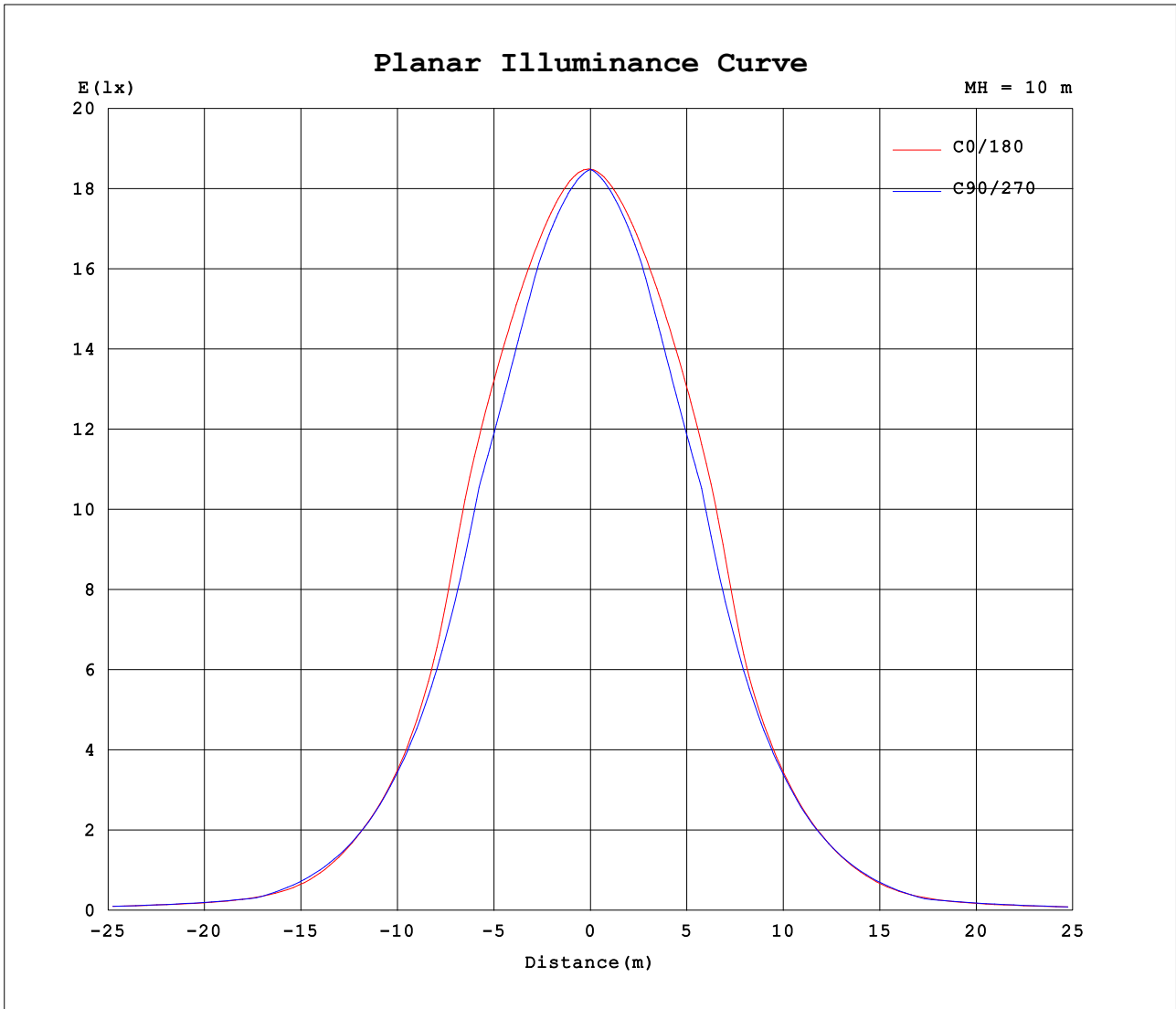
AvgL	cd/m2
L_0~180 (65) av	1405
L_0~180 (75) av	1587
L_0~180 (85) av	149
L_90~270 (65) av	1468
L_90~270 (75) av	1589
L_90~270 (85) av	0
L_45 (65) av	1162
L_45 (75) av	1005
L_45 (85) av	0

Standard: GB/T 29293-2012

H(□) Range:-90 - 90DEG
H(□) Interval: 1.0DEG
Test Speed: HIGH
Temperature:25.3DEG
Operators:
Test Date:2022-10-28

V(B) Range:-75 - 75DEG
V(B) Interval: 5.0DEG
Test System:EVERFINE GO-2000A_V1 SYSTEM V2.0.366
Humidity:65.0%
Test Distance:7.500m [K=1.0667]
Remarks:

Planar Illuminance Curve



H(□) Range:-90 - 90DEG
 H(□) Interval: 1.0DEG
 Test Speed: HIGH
 Temperature:25.3DEG
 Operators:
 Test Date:2022-10-28

V(B) Range:-75 - 75DEG
 V(B) Interval: 5.0DEG
 Test System:EVERFINE GO-2000A_V1 SYSTEM V2.0.366
 Humidity:65.0%
 Test Distance:7.500m [K=1.0667]
 Remarks:

LUMINOUS DISTRIBUTION INTENSITY DATA

Test:U:220.13V I:0.1193A P:25.403W PF:0.9670 Freq:49.99Hz Lamp Flux:3962.62x1 lm		
NAME: GLM-SPL6262-25W	TYPE:LED	WEIGHT:
SPEC.:	DIM.:	SERIAL No.:1
MFR.: EVERFINE	SUR.:	Shielding Angle:

Table--1

UNIT: cd

C (DEG) □ (DEG)	0	5	10	15	20	25	30	35	40	45	50	55	60	65	70	75	80	85	90
0	1849	1849	1849	1849	1849	1849	1849	1849	1849	1849	1849	1849	1849	1849	1849	1849	1849	1849	1849
5	1850	1849	1847	1846	1844	1843	1841	1840	1838	1837	1836	1835	1834	1833	1832	1831	1830	1830	1829
10	1849	1846	1843	1841	1838	1835	1832	1830	1827	1825	1823	1820	1818	1816	1815	1813	1812	1811	1810
15	1851	1847	1843	1839	1835	1831	1827	1823	1819	1815	1811	1808	1805	1801	1798	1796	1793	1791	1790
20	1856	1850	1845	1839	1834	1828	1823	1818	1813	1807	1797	1783	1771	1761	1753	1746	1741	1737	1735
25	1853	1844	1835	1828	1822	1817	1813	1809	1781	1759	1741	1727	1716	1707	1699	1692	1687	1683	1680
30	1816	1797	1784	1778	1776	1778	1752	1711	1686	1671	1662	1655	1649	1645	1641	1637	1632	1628	1625
35	1628	1590	1572	1575	1600	1591	1536	1499	1495	1515	1538	1555	1520	1485	1458	1439	1424	1414	1409
40	1273	1244	1235	1245	1251	1222	1202	1180	1177	1230	1272	1268	1241	1217	1206	1204	1201	1195	1192
45	991	956	947	965	950	927	902	877	880	910	954	970	951	934	938	959	974	977	975
50	733	686	665	670	684	687	672	659	657	669	690	691	689	701	722	746	753	742	734
55	451	440	442	455	478	496	490	471	458	462	490	515	537	548	552	552	538	509	493
60	264	283	310	327	348	350	343	318	304	303	318	348	383	403	394	370	328	277	252
65	211	232	249	259	259	257	244	228	198	170	164	189	250	296	304	292	264	232	218
70	180	183	203	221	215	191	171	156	120	106	116	142	181	222	237	234	210	189	183
75	143	135	122	141	149	128	105	105	103	102	108	112	123	151	170	174	154	146	149
80	74.1	66.2	63.4	66.4	76.6	72.9	69.8	59.3	70.6	75.5	62.8	43.6	30.9	26.3	19.7	11.6	4.61	1.09	0.00
85	6.48	0.17	8.64	12.6	19.6	9.72	0.00	0.00	0.00	0.00	0.00	0.00	0.00	0.00	0.00	0.00	0.00	0.00	0.00
90	0.00	0.00	0.00	0.00	0.00	0.00	0.00	0.00	0.00	0.00	0.00	0.00	0.00	0.00	0.00	0.00	0.00	0.00	0.00

H(□) Range:-90 - 90DEG
H(□) Interval: 1.0DEG
Test Speed: HIGH
Temperature:25.3DEG
Operators:
Test Date:2022-10-28

V(B) Range:-75 - 75DEG
V(B) Interval: 5.0DEG
Test System:EVERFINE GO-2000A_V1 SYSTEM V2.0.366
Humidity:65.0%
Test Distance:7.500m [K=1.0667]
Remarks:

LUMINOUS DISTRIBUTION INTENSITY DATA

Test:U:220.13V I:0.1193A P:25.403W PF:0.9670 Freq:49.99Hz Lamp Flux:3962.62x1 lm		
NAME: GLM-SPL6262-25W	TYPE:LED	WEIGHT:
SPEC.:	DIM.:	SERIAL No.:1
MFR.: EVERFINE	SUR.:	Shielding Angle:

Table--2

UNIT: cd

C (DEG) □ (DEG)	95	100	105	110	115	120	125	130	135	140	145	150	155	160	165	170	175	180	185
0	1849	1849	1849	1849	1849	1849	1849	1849	1849	1849	1849	1849	1849	1849	1849	1849	1849	1849	1849
5	1829	1829	1829	1829	1829	1829	1829	1830	1831	1831	1832	1833	1834	1836	1837	1838	1840	1841	1840
10	1809	1809	1809	1809	1809	1810	1811	1812	1814	1816	1817	1819	1822	1824	1827	1829	1832	1835	1832
15	1789	1789	1790	1791	1792	1793	1795	1798	1800	1803	1806	1809	1813	1817	1821	1825	1830	1834	1829
20	1735	1737	1740	1744	1750	1758	1768	1779	1788	1792	1797	1802	1807	1812	1818	1824	1830	1836	1829
25	1680	1682	1686	1690	1696	1703	1712	1723	1739	1759	1785	1789	1794	1799	1806	1813	1821	1830	1820
30	1625	1627	1630	1633	1636	1638	1640	1645	1654	1668	1692	1732	1757	1757	1758	1762	1773	1789	1772
35	1411	1421	1436	1455	1480	1511	1543	1526	1505	1487	1492	1528	1588	1601	1572	1561	1570	1600	1568
40	1194	1200	1207	1212	1220	1237	1260	1267	1234	1181	1180	1203	1226	1249	1231	1214	1215	1235	1214
45	976	977	969	954	942	949	964	955	914	879	871	896	922	951	975	954	954	978	955
50	741	753	754	735	706	685	688	693	675	660	659	666	684	692	690	682	689	723	692
55	507	535	555	557	548	534	517	498	475	467	474	488	493	484	466	455	451	462	450
60	275	322	366	394	402	383	352	327	313	314	328	349	353	349	331	317	284	258	278
65	230	259	289	302	294	252	195	172	177	200	229	247	257	257	253	234	212	188	206
70	188	207	234	237	219	181	145	121	107	113	148	168	186	202	203	188	173	166	172
75	144	154	177	169	146	120	112	106	98.6	97.8	100	103	121	139	133	115	126	134	127
80	1.07	4.61	11.8	19.5	25.1	29.6	42.4	59.1	71.3	72.0	61.8	67.8	69.1	72.4	61.9	59.7	59.1	75.4	75.4
85	0.00	0.00	0.00	0.00	0.00	0.00	0.00	0.00	0.00	0.00	0.00	0.00	9.96	21.6	13.8	7.47	0.14	2.28	6.31
90	0.00	0.00	0.00	0.00	0.00	0.00	0.00	0.00	0.00	0.00	0.00	0.00	0.00	0.00	0.00	0.00	0.00	0.00	0.00

H(□) Range:-90 - 90DEG
H(□) Interval: 1.0DEG
Test Speed: HIGH
Temperature:25.3DEG
Operators:
Test Date:2022-10-28

V(B) Range:-75 - 75DEG
V(B) Interval: 5.0DEG
Test System:EVERFINE GO-2000A_V1 SYSTEM V2.0.366
Humidity:65.0%
Test Distance:7.500m [K=1.0667]
Remarks:

LUMINOUS DISTRIBUTION INTENSITY DATA

Test:U:220.13V I:0.1193A P:25.403W PF:0.9670 Freq:49.99Hz Lamp Flux:3962.62x1 lm		
NAME: GLM-SPL6262-25W	TYPE:LED	WEIGHT:
SPEC.:	DIM.:	SERIAL No.:1
MFR.: EVERFINE	SUR.:	Shielding Angle:

Table--3

UNIT: cd

C (DEG) □ (DEG)	190	195	200	205	210	215	220	225	230	235	240	245	250	255	260	265	270	275	280
0	1849	1849	1849	1849	1849	1849	1849	1849	1849	1849	1849	1849	1849	1849	1849	1849	1849	1849	1849
5	1838	1837	1835	1834	1833	1832	1831	1830	1829	1828	1828	1828	1827	1827	1827	1828	1828	1828	1829
10	1829	1826	1823	1821	1818	1816	1814	1812	1811	1809	1808	1807	1807	1806	1806	1807	1807	1808	1809
15	1825	1820	1816	1812	1808	1805	1801	1798	1795	1793	1791	1789	1787	1786	1786	1786	1786	1787	1789
20	1823	1816	1811	1805	1800	1795	1790	1786	1777	1765	1755	1747	1741	1736	1732	1731	1731	1733	1736
25	1811	1803	1797	1791	1786	1781	1756	1735	1720	1708	1699	1692	1686	1681	1677	1676	1675	1677	1681
30	1760	1754	1753	1753	1728	1690	1666	1651	1642	1636	1633	1630	1628	1625	1622	1620	1620	1622	1625
35	1557	1567	1597	1584	1526	1492	1489	1507	1525	1539	1504	1472	1448	1429	1414	1404	1400	1404	1414
40	1211	1227	1244	1223	1205	1185	1187	1240	1267	1252	1223	1204	1200	1197	1190	1184	1180	1182	1186
45	954	975	949	920	900	881	886	913	947	950	929	917	934	957	964	964	961	959	955
50	688	694	689	676	662	658	659	670	679	665	660	679	711	738	739	727	719	723	732
55	455	463	473	476	475	464	458	463	481	492	509	525	536	537	518	491	477	489	515
60	308	323	336	338	334	314	299	297	308	326	355	379	377	347	302	257	235	257	304
65	224	242	248	249	235	213	182	157	148	166	223	269	283	269	241	212	200	211	242
70	188	201	199	178	156	132	92.6	84.3	94.0	118	153	193	211	210	190	170	164	168	190
75	121	139	140	115	89.0	82.6	74.0	71.3	77.2	84.7	94.9	120	138	149	139	127	128	124	137
80	73.1	72.5	74.7	63.7	54.9	42.3	44.9	46.7	40.3	30.4	22.3	20.1	15.5	9.80	4.14	0.94	0.00	0.92	4.09
85	18.0	14.5	16.9	6.95	0.00	0.00	0.00	0.00	0.00	0.00	0.00	0.00	0.00	0.00	0.00	0.00	0.00	0.00	0.00
90	0.00	0.00	0.00	0.00	0.00	0.00	0.00	0.00	0.00	0.00	0.00	0.00	0.00	0.00	0.00	0.00	0.00	0.00	0.00

H(□) Range:-90 - 90DEG
H(□) Interval: 1.0DEG
Test Speed: HIGH
Temperature:25.3DEG
Operators:
Test Date:2022-10-28

V(B) Range:-75 - 75DEG
V(B) Interval: 5.0DEG
Test System:EVERFINE GO-2000A_V1 SYSTEM V2.0.366
Humidity:65.0%
Test Distance:7.500m [K=1.0667]
Remarks:

LUMINOUS DISTRIBUTION INTENSITY DATA

Test:U:220.13V I:0.1193A P:25.403W PF:0.9670 Freq:49.99Hz Lamp Flux:3962.62x1 lm		
NAME: GLM-SPL6262-25W	TYPE:LED	WEIGHT:
SPEC.:	DIM.:	SERIAL No.:1
MFR.: EVERFINE	SUR.:	Shielding Angle:

Table--4

UNIT: cd

C (DEG) □ (DEG)	285	290	295	300	305	310	315	320	325	330	335	340	345	350	355				
0	1849	1849	1849	1849	1849	1849	1849	1849	1849	1849	1849	1849	1849	1849	1849				
5	1830	1831	1831	1832	1834	1835	1836	1837	1839	1840	1842	1844	1845	1847	1849				
10	1810	1812	1814	1815	1818	1820	1822	1825	1828	1830	1833	1836	1839	1842	1846				
15	1791	1794	1796	1800	1803	1806	1810	1814	1818	1823	1827	1832	1837	1842	1847				
20	1741	1747	1755	1764	1775	1789	1799	1805	1810	1816	1822	1829	1835	1842	1849				
25	1686	1691	1699	1707	1718	1732	1749	1771	1798	1803	1809	1815	1823	1832	1842				
30	1629	1632	1636	1641	1646	1654	1664	1680	1705	1744	1769	1770	1774	1782	1796				
35	1428	1447	1473	1511	1549	1536	1519	1503	1506	1541	1595	1606	1582	1577	1592				
40	1189	1190	1201	1228	1262	1277	1250	1202	1201	1221	1238	1264	1254	1241	1247				
45	940	917	914	936	961	957	925	903	901	920	941	963	979	959	962				
50	724	698	680	670	677	686	677	669	672	687	701	700	693	684	694				
55	529	528	530	521	500	484	463	462	477	497	500	483	461	447	441				
60	345	372	387	367	332	309	297	302	319	344	349	344	324	306	281				
65	267	280	278	232	169	148	157	188	221	241	254	254	252	244	230				
70	208	210	199	159	120	95.1	86.5	102	142	160	184	212	221	205	182				
75	147	138	123	98.8	86.0	81.1	77.8	80.6	87.0	90.8	121	149	148	123	135				
80	9.70	15.5	20.5	23.2	31.1	44.2	52.7	45.2	40.1	56.3	66.7	79.2	75.9	77.1	80.1				
85	0.00	0.00	0.00	0.00	0.00	0.00	0.00	0.00	0.00	0.00	7.16	17.2	14.7	19.1	6.92				
90	0.00	0.00	0.00	0.00	0.00	0.00	0.00	0.00	0.00	0.00	0.00	0.00	0.00	0.00	0.00				

H(□) Range:-90 - 90DEG
H(□) Interval: 1.0DEG
Test Speed: HIGH
Temperature:25.3DEG
Operators:
Test Date:2022-10-28

V(B) Range:-75 - 75DEG
V(B) Interval: 5.0DEG
Test System:EVERFINE GO-2000A_V1 SYSTEM V2.0.366
Humidity:65.0%
Test Distance:7.500m [K=1.0667]
Remarks: