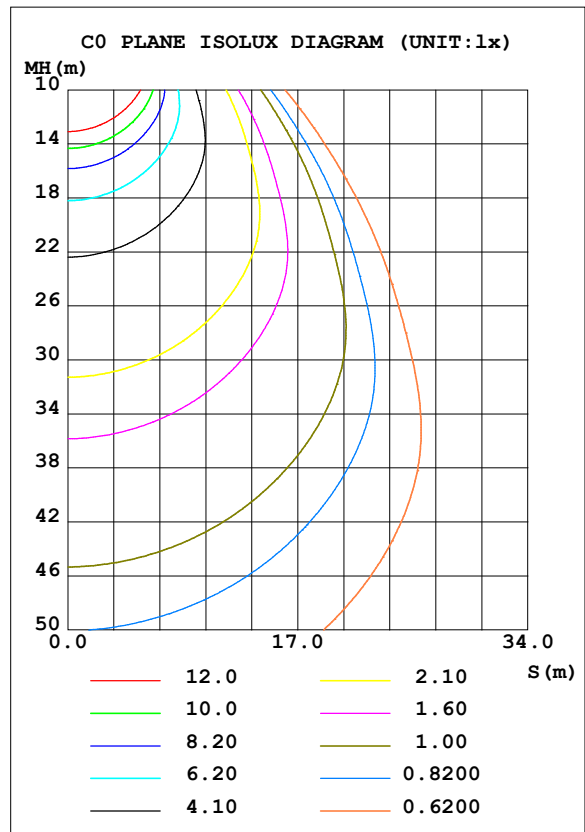
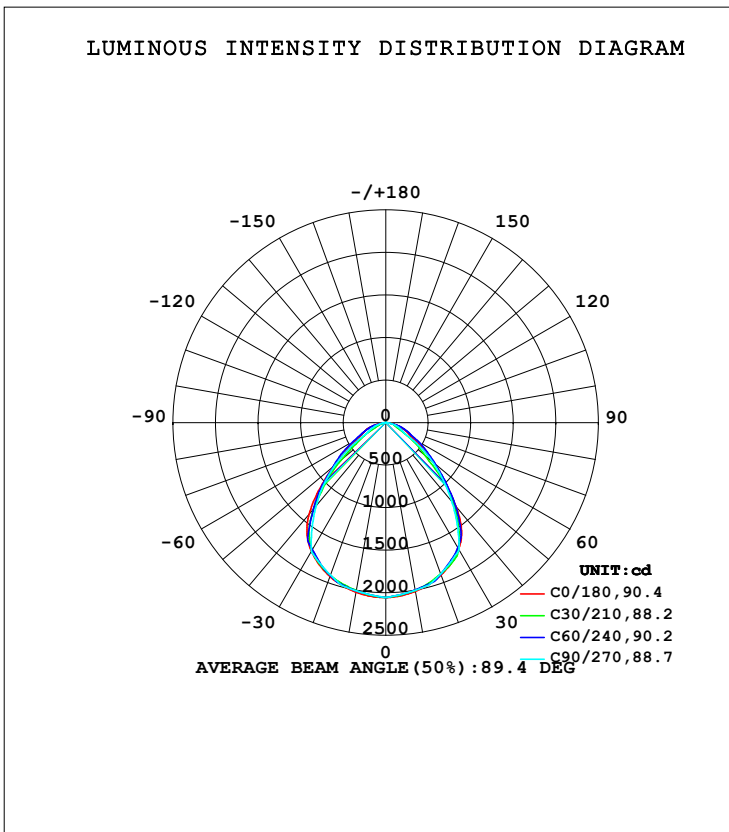


LUMINAIRE PHOTOMETRIC TEST REPORT

Test:U:220.21V I:0.1193A P:25.389W PF:0.9666 Freq:49.99Hz Lamp Flux:4167.97x1 lm		
NAME: GLM-BPL6262A-25W	TYPE:LED	WEIGHT:
SPEC.:	DIM.:	SERIAL No.:1
MFR.: EVERFINE	SUR.:	Shielding Angle:

DATA OF LAMP		PHOTOMETRIC DATA Eff: 164.17 lm/W			
MODEL		I _{max} (cd)	2056	S/MH (C0/180)	1.26
NOMINAL POWER (W)		LOR (%)	100.0	S/MH (C90/270)	1.24
RATED VOLTAGE (V)	220.0	TOTAL FLUX (lm)	4168.0	<input type="checkbox"/> UP, DN (C0-180)	0.0, 49.6
NOMINAL FLUX (lm)	4167.97	CIE CLASS	DIRECT	<input type="checkbox"/> UP, DN (C180-360)	0.0, 50.4
LAMPS INSIDE	1	<input type="checkbox"/> up (%)	0.0	CIBSE SHR NOM	1.25
TEST VOLTAGE (V)	220	<input type="checkbox"/> down (%)	100.0	CIBSE SHR MAX	1.30



H(□) Range:-90 - 90DEG
H(□) Interval: 1.0DEG
Test Speed: HIGH
Temperature:25.3DEG
Operators:
Test Date:2022-10-12

V(B) Range:-75 - 75DEG
V(B) Interval: 5.0DEG
Test System:EVERFINE GO-2000A_V1 SYSTEM V2.0.366
Humidity:65.0%
Test Distance:7.500m [K=1.1000]
Remarks:

ZONAL FLUX DIAGRAM

ZONAL FLUX DIAGRAM:

mm	C0	C45	C90	C135	C180	C225	C270	C315	mm	□ zone	□ total	%lum, lamp
10	2013	1997	2001	2000	2024	2004	2008	2002	0- 10	193.2	193.2	4.64,4.64
20	1905	1912	1891	1912	1924	1918	1906	1920	10- 20	554.6	747.9	17.9,17.9
30	1715	1678	1725	1696	1748	1714	1751	1703	20- 30	838.6	1586	38.1,38.1
40	1282	1274	1209	1352	1401	1391	1273	1318	30- 40	955.2	2542	61,61
50	741.3	697.2	719.3	772.4	804.8	796.8	776.5	720.7	40- 50	776.1	3318	79.6,79.6
60	369.1	346.3	255.5	374.2	393.9	368.0	261.6	346.5	50- 60	460.4	3778	90.6,90.6
70	222.4	189.9	156.9	192.2	243.1	166.5	147.7	179.0	60- 70	245.8	4024	96.5,96.5
80	82.04	76.30	0	77.63	69.72	66.08	0	76.31	70- 80	132.8	4157	99.7,99.7
90	0	0	0	0	0	0	0	0	80- 90	11.20	4168	100,100
100									90-100			
110									100-110			
120									110-120			
130									120-130			
140									130-140			
150									140-150			
160									150-160			
170									160-170			
180									170-180			
DEG	LUMINOUS INTENSITY:cd									UNIT:lm		

Conical surface Flux(90deg): 2967.8 lm

%lum = 71.2%

%lamp = 71.2%

Conical surface Flux(120deg): 3778.1 lm

%lum = 90.6%

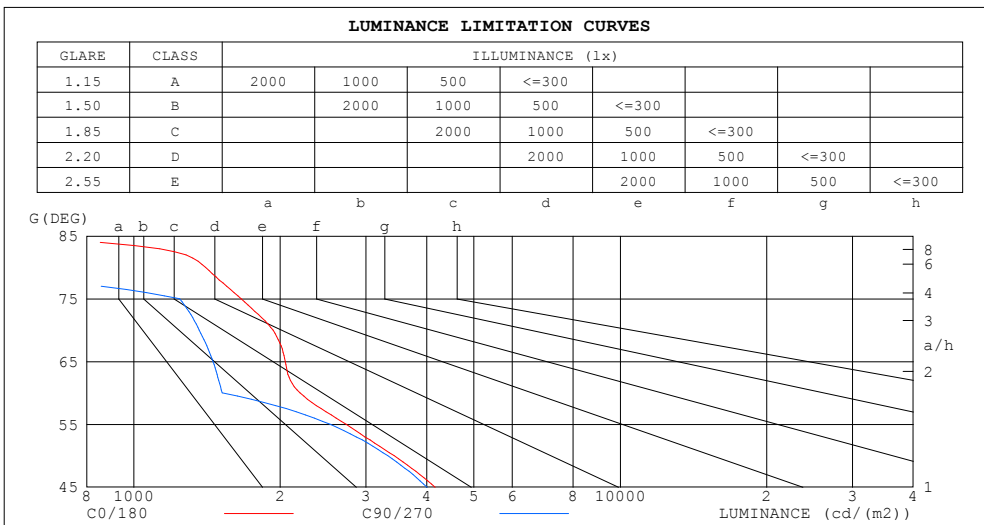
%lamp = 90.6%

H(□) Range:-90 - 90DEG
H(□) Interval: 1.0DEG
Test Speed: HIGH
Temperature:25.3DEG
Operators:
Test Date:2022-10-12

V(B) Range:-75 - 75DEG
V(B) Interval: 5.0DEG
Test System:EVERFINE GO-2000A_V1 SYSTEM V2.0.366
Humidity:65.0%
Test Distance:7.500m [K=1.1000]
Remarks:

LUMINANCE LIMITATION CURVES

Test:U:220.21V I:0.1193A P:25.389W PF:0.9666 Freq:49.99Hz Lamp Flux:4167.97x1 lm		
NAME: GLM-BPL6262A-25W	TYPE:LED	WEIGHT:
SPEC.:	DIM.:	SERIAL No.:1
MFR.: EVERFINE	SUR.:	Shielding Angle:



LUMINANCE cd/(m2)		
G (DEG)	C0/180	C90/270
85	370	0
80	1404	0
75	1663	1242
70	1933	1363
65	2049	1455
60	2195	1519
55	2732	2532
50	3428	3327
45	4163	4007

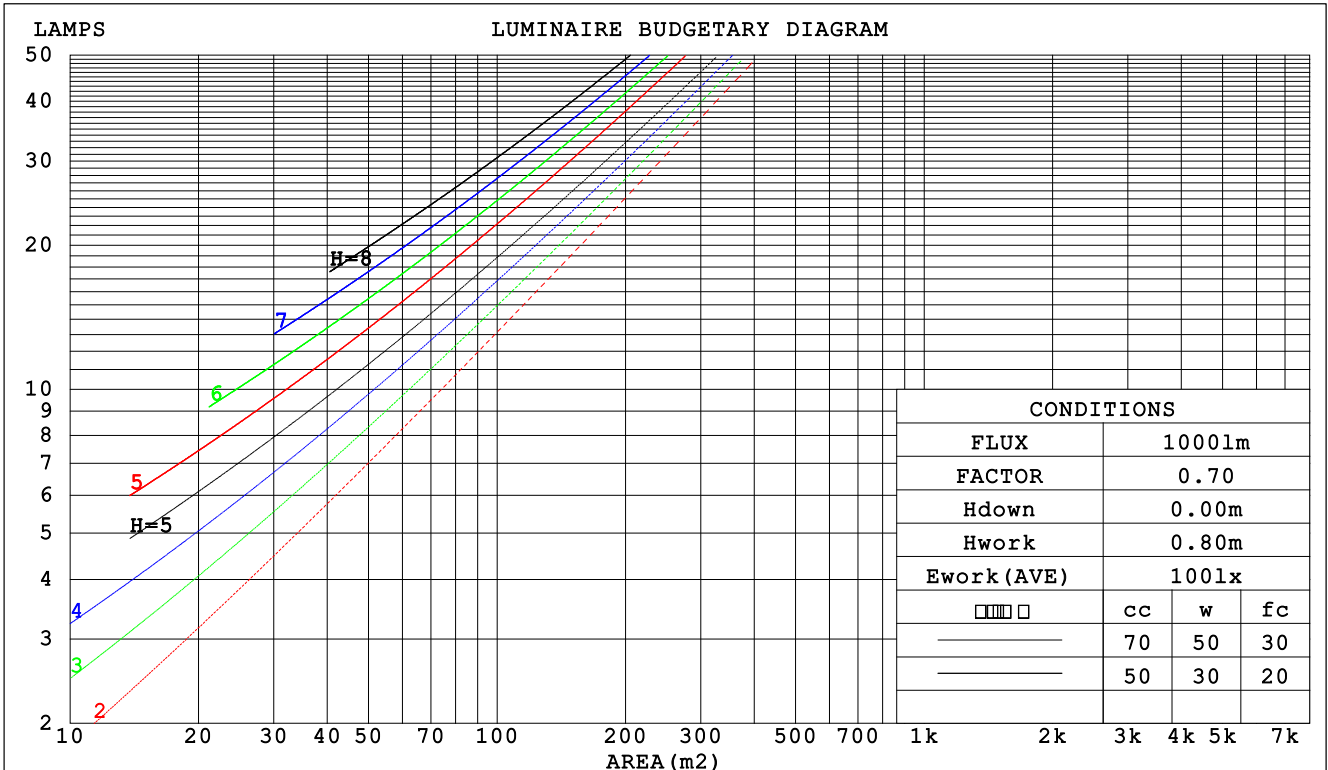
H(□) Range:-90 - 90DEG
H(□) Interval: 1.0DEG
Test Speed: HIGH
Temperature:25.3DEG
Operators:
Test Date:2022-10-12

V(B) Range:-75 - 75DEG
V(B) Interval: 5.0DEG
Test System:EVERFINE GO-2000A_V1 SYSTEM V2.0.366
Humidity:65.0%
Test Distance:7.500m [K=1.1000]
Remarks:

CU AND LUMINAIRE BUDGETARY ESTIMATE DIAGRAM

Test:U:220.21V I:0.1193A P:25.389W PF:0.9666 Freq:49.99Hz Lamp Flux:4167.97x1 lm		
NAME: GLM-BPL6262A-25W	TYPE:LED	WEIGHT:
SPEC.:	DIM.:	SERIAL No.:1
MFR.: EVERFINE	SUR.:	Shielding Angle:

□cc	80%			70%			50%			30%			10%			0
□w	50%	30%	10%	50%	30%	10%	50%	30%	10%	50%	30%	10%	50%	30%	10%	0
□fc	20%			20%			20%			20%			20%			0
RCR	RCR:Room Cavity Ratio						Coefficients of Utilization(CU)									
0.0	1.19	1.19	1.19	1.16	1.16	1.16	1.11	1.11	1.11	1.06	1.06	1.06	1.02	1.02	1.02	1.00
1.0	1.07	1.04	1.01	1.05	1.02	.99	1.01	.98	.96	.97	.95	.93	.93	.92	.90	.88
2.0	.96	.90	.85	.94	.89	.84	.91	.86	.83	.87	.84	.81	.85	.82	.79	.77
3.0	.86	.79	.74	.85	.78	.73	.82	.76	.72	.79	.74	.71	.77	.73	.69	.67
4.0	.78	.70	.64	.76	.69	.64	.74	.68	.63	.72	.66	.62	.70	.65	.61	.59
5.0	.70	.62	.57	.69	.62	.56	.67	.61	.56	.65	.60	.55	.64	.59	.55	.53
6.0	.64	.56	.50	.63	.56	.50	.62	.55	.50	.60	.54	.49	.58	.53	.49	.47
7.0	.59	.51	.45	.58	.50	.45	.56	.50	.45	.55	.49	.45	.54	.48	.44	.42
8.0	.54	.46	.41	.53	.46	.41	.52	.45	.41	.51	.45	.40	.50	.44	.40	.38
9.0	.50	.42	.37	.49	.42	.37	.48	.42	.37	.47	.41	.37	.46	.41	.37	.35
10.0	.46	.39	.34	.46	.39	.34	.45	.38	.34	.44	.38	.34	.43	.38	.34	.32



H(□) Range:-90 - 90DEG
H(□) Interval: 1.0DEG
Test Speed: HIGH
Temperature:25.3DEG
Operators:
Test Date:2022-10-12

V(B) Range:-75 - 75DEG
V(B) Interval: 5.0DEG
Test System:EVERFINE GO-2000A_V1 SYSTEM V2.0.366
Humidity:65.0%
Test Distance:7.500m [K=1.1000]
Remarks:

WEC AND CCEC

Test:U:220.21V I:0.1193A P:25.389W PF:0.9666 Freq:49.99Hz Lamp Flux:4167.97x1 lm		
NAME: GLM-BPL6262A-25W	TYPE:LED	WEIGHT:
SPEC.:	DIM.:	SERIAL No.:1
MFR.: EVERFINE	SUR.:	Shielding Angle:

<input type="checkbox"/> cc	80%			70%			50%			30%			10%			0
<input type="checkbox"/> w	50%	30%	10%	50%	30%	10%	50%	30%	10%	50%	30%	10%	50%	30%	10%	0
<input type="checkbox"/> fc	20%			20%			20%			20%			20%			0
RCR	RCR:Room Cavity Ratio						Wall Exitance Coefficients (WEC)									
0.0																
1.0	.247	.141	.045	.240	.137	.044	.227	.130	.042	.215	.124	.040	.205	.119	.038	
2.0	.240	.131	.040	.234	.129	.040	.223	.124	.038	.212	.119	.037	.203	.115	.036	
3.0	.227	.121	.036	.222	.119	.036	.212	.115	.035	.203	.111	.034	.194	.108	.033	
4.0	.214	.111	.033	.209	.109	.032	.200	.106	.032	.192	.103	.031	.185	.100	.031	
5.0	.201	.102	.030	.197	.101	.029	.189	.098	.029	.182	.096	.029	.175	.094	.028	
6.0	.189	.095	.027	.185	.094	.027	.179	.092	.027	.172	.089	.026	.166	.087	.026	
7.0	.178	.088	.025	.175	.087	.025	.169	.085	.025	.163	.084	.024	.158	.082	.024	
8.0	.168	.082	.023	.165	.081	.023	.160	.080	.023	.155	.078	.023	.150	.077	.022	
9.0	.159	.077	.021	.156	.076	.021	.151	.075	.021	.147	.074	.021	.142	.072	.021	
10.0	.151	.072	.020	.148	.072	.020	.144	.070	.020	.140	.069	.020	.136	.068	.020	

<input type="checkbox"/> cc	80%			70%			50%			30%			10%			0
<input type="checkbox"/> w	50%	30%	10%	50%	30%	10%	50%	30%	10%	50%	30%	10%	50%	30%	10%	0
<input type="checkbox"/> fc	20%			20%			20%			20%			20%			0
RCR	RCR:Room Cavity Ratio						Ceiling Cavity Exitance Coefficients (CCEC)									
0.0	.190	.190	.190	.163	.163	.163	.111	.111	.111	.064	.064	.064	.020	.020	.020	
1.0	.176	.157	.139	.151	.134	.120	.103	.093	.083	.059	.054	.048	.019	.017	.016	
2.0	.165	.132	.104	.142	.114	.090	.097	.079	.063	.056	.046	.037	.018	.015	.012	
3.0	.156	.114	.080	.134	.098	.070	.092	.068	.049	.053	.040	.029	.017	.013	.009	
4.0	.148	.100	.064	.127	.087	.055	.087	.060	.039	.051	.035	.023	.016	.012	.008	
5.0	.141	.089	.052	.121	.077	.045	.083	.054	.032	.048	.032	.019	.016	.010	.006	
6.0	.134	.081	.043	.115	.070	.037	.079	.049	.026	.046	.029	.016	.015	.009	.005	
7.0	.128	.074	.036	.110	.064	.031	.076	.045	.022	.044	.026	.013	.014	.009	.004	
8.0	.122	.068	.031	.105	.059	.027	.072	.041	.019	.042	.024	.011	.014	.008	.004	
9.0	.116	.063	.027	.100	.055	.024	.069	.038	.017	.040	.023	.010	.013	.007	.003	
10.0	.111	.059	.024	.096	.051	.021	.066	.036	.015	.039	.021	.009	.013	.007	.003	

H() Range:-90 - 90DEG
H() Interval: 1.0DEG
Test Speed: HIGH
Temperature:25.3DEG
Operators:
Test Date:2022-10-12

V(B) Range:-75 - 75DEG
V(B) Interval: 5.0DEG
Test System:EVERFINE GO-2000A_V1 SYSTEM V2.0.366
Humidity:65.0%
Test Distance:7.500m [K=1.1000]
Remarks:

UGR(Unified Glare Rating) Table

Test:U:220.21V I:0.1193A P:25.389W PF:0.9666 Freq:49.99Hz Lamp Flux:4167.97x1 lm										
NAME: GLM-BPL6262A-25W					TYPE:LED			WEIGHT:		
SPEC.:					DIM.:			SERIAL No.:1		
MFR.: EVERFINE					SUR.:			Shielding Angle:		
ceiling/cavity	0.7	0.7	0.5	0.5	0.3	0.7	0.7	0.5	0.5	0.3
walls	0.5	0.3	0.5	0.3	0.3	0.5	0.3	0.5	0.3	0.3
working plane	0.2	0.2	0.2	0.2	0.2	0.2	0.2	0.2	0.2	0.2
Room dimensions	Viewed crosswise					Viewed endwise				
x = 2H y = 2H	15.1	16.4	15.3	16.6	16.8	15.7	17.0	15.9	17.2	17.4
3H	15.8	17.1	16.1	17.3	17.5	16.3	17.5	16.6	17.7	17.9
4H	16.3	17.4	16.6	17.7	17.9	16.5	17.7	16.8	17.9	18.2
6H	16.5	17.6	16.9	17.9	18.2	16.5	17.6	16.8	17.8	18.1
8H	16.6	17.6	16.9	17.9	18.2	16.5	17.5	16.8	17.8	18.0
12H	16.5	17.5	16.9	17.8	18.1	16.4	17.4	16.8	17.7	18.0
4H 2H	15.3	16.5	15.6	16.7	16.9	15.9	17.0	16.2	17.3	17.5
3H	16.1	17.1	16.5	17.4	17.7	16.8	17.8	17.2	18.1	18.4
4H	16.7	17.6	17.0	17.9	18.2	17.3	18.2	17.7	18.5	18.8
6H	17.1	17.9	17.5	18.2	18.6	17.3	18.1	17.7	18.5	18.8
8H	17.1	17.9	17.5	18.2	18.6	17.3	18.0	17.7	18.4	18.8
12H	17.1	17.8	17.5	18.2	18.6	17.3	17.9	17.7	18.3	18.7
8H 4H	16.9	17.6	17.3	18.0	18.3	17.4	18.2	17.8	18.5	18.9
6H	17.3	17.9	17.8	18.3	18.8	17.5	18.1	17.9	18.5	18.9
8H	17.4	18.0	17.9	18.4	18.8	17.5	18.0	17.9	18.4	18.9
12H	17.4	17.9	17.9	18.3	18.8	17.4	17.9	17.9	18.3	18.8
12H 4H	16.8	17.5	17.3	17.9	18.3	17.4	18.1	17.8	18.5	18.8
6H	17.3	17.9	17.8	18.3	18.7	17.5	18.0	18.0	18.5	18.9
8H	17.4	17.9	17.9	18.3	18.8	17.5	17.9	17.9	18.4	18.8
Variations with the observer position at spacings:										
S = 1.0H	+ 0.6 / - 0.8					+ 0.6 / - 0.6				
1.5H	+ 0.6 / - 0.8					+ 0.3 / - 0.6				
2.0H	+ 1.7 / - 1.8					+ 1.0 / - 2.3				

CIE Pub.117, 4168 lm Total Lamp Luminous Flux Corrected (8log(F/F0) = 5.0)

H(□) Range:-90 - 90DEG
H(□) Interval: 1.0DEG
Test Speed: HIGH
Temperature:25.3DEG
Operators:
Test Date:2022-10-12

V(B) Range:-75 - 75DEG
V(B) Interval: 5.0DEG
Test System:EVERFINE GO-2000A_V1 SYSTEM V2.0.366
Humidity:65.0%
Test Distance:7.500m [K=1.1000]
Remarks:

UTILIZATION FACTORS TABLE

Test:U:220.21V I:0.1193A P:25.389W PF:0.9666 Freq:49.99Hz Lamp Flux:4167.97x1 lm		
NAME: GLM-BPL6262A-25W	TYPE:LED	WEIGHT:
SPEC.:	DIM.:	SERIAL No.:1
MFR.: EVERFINE	SUR.:	Shielding Angle:

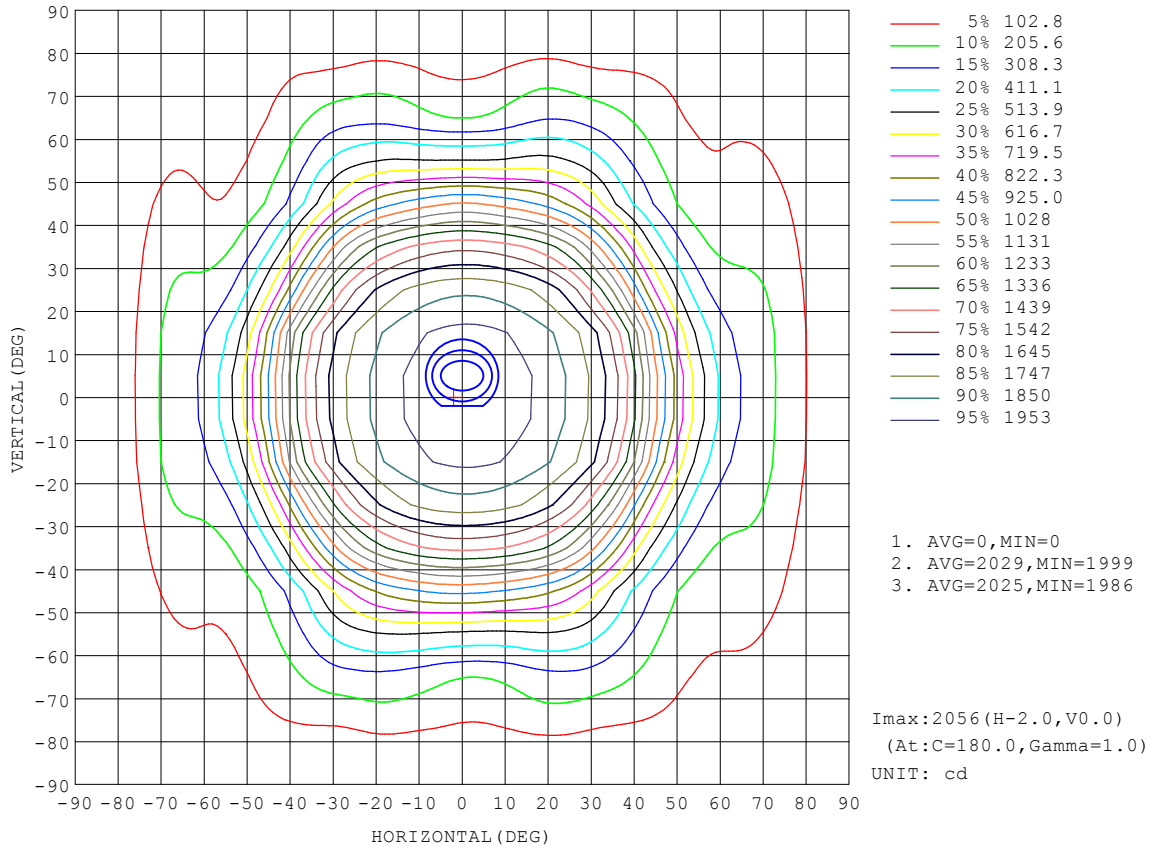
REFLECTANCE										
Ceiling	0.8	0.8	0.8	0.7	0.7	0.7	0.5	0.5	0.5	0
Walls	0.7	0.5	0.3	0.7	0.5	0.3	0.7	0.5	0.3	0
Working plane	0.2	0.2	0.2	0.2	0.2	0.2	0.2	0.2	0.2	0
ROOM INDEX	UTILIZATION FACTORS (PERCENT) $k(RI) \times RCR = 5$									
k = 0.60	67	57	51	66	57	51	65	56	51	45
0.80	77	67	61	76	67	61	74	66	61	55
1.00	85	76	70	84	75	69	82	76	69	63
1.25	91	83	77	90	82	77	87	81	76	70
1.50	95	88	82	94	87	82	91	85	80	74
2.00	101	94	89	99	93	88	96	91	87	80
2.50	104	98	93	102	96	92	98	94	90	83
3.00	106	101	97	104	100	96	101	97	94	86
4.00	109	105	101	107	103	100	103	100	97	89
5.00	111	108	104	109	106	103	105	102	100	91
ROOM INDEX	UF(total)									Direct
According to DIN EN 13032-2 2004			Suspended				SHRNOM = 1.25			

H(□) Range:-90 - 90DEG
H(□) Interval: 1.0DEG
Test Speed: HIGH
Temperature:25.3DEG
Operators:
Test Date:2022-10-12

V(B) Range:-75 - 75DEG
V(B) Interval: 5.0DEG
Test System:EVERFINE GO-2000A_V1 SYSTEM V2.0.366
Humidity:65.0%
Test Distance:7.500m [K=1.1000]
Remarks:

ISOCANDELA DIAGRAM

Test:U:220.21V I:0.1193A P:25.389W PF:0.9666 Freq:49.99Hz Lamp Flux:4167.97x1 lm		
NAME: GLM-BPL6262A-25W	TYPE:LED	WEIGHT:
SPEC.:	DIM.:	SERIAL No.:1
MFR.: EVERFINE	SUR.:	Shielding Angle:

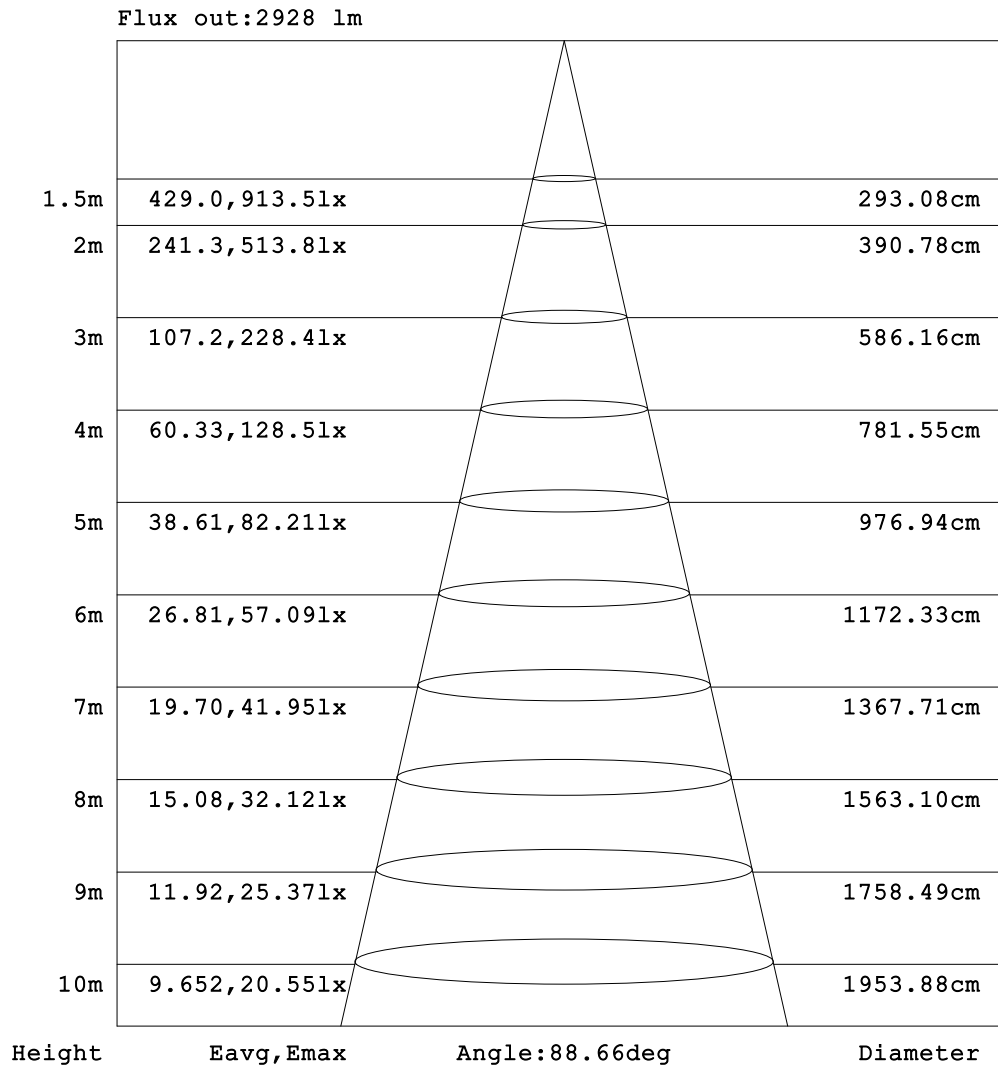


H(□) Range:-90 - 90DEG
 H(□) Interval: 1.0DEG
 Test Speed: HIGH
 Temperature:25.3DEG
 Operators:
 Test Date:2022-10-12

V(B) Range:-75 - 75DEG
 V(B) Interval: 5.0DEG
 Test System:EVERFINE GO-2000A_V1 SYSTEM V2.0.366
 Humidity:65.0%
 Test Distance:7.500m [K=1.1000]
 Remarks:

AAI Figure

Test:U:220.21V I:0.1193A P:25.389W PF:0.9666 Freq:49.99Hz Lamp Flux:4167.97x1 lm		
NAME: GLM-BPL6262A-25W	TYPE:LED	WEIGHT:
SPEC.:	DIM.:	SERIAL No.:1
MFR.: EVERFINE	SUR.:	Shielding Angle:



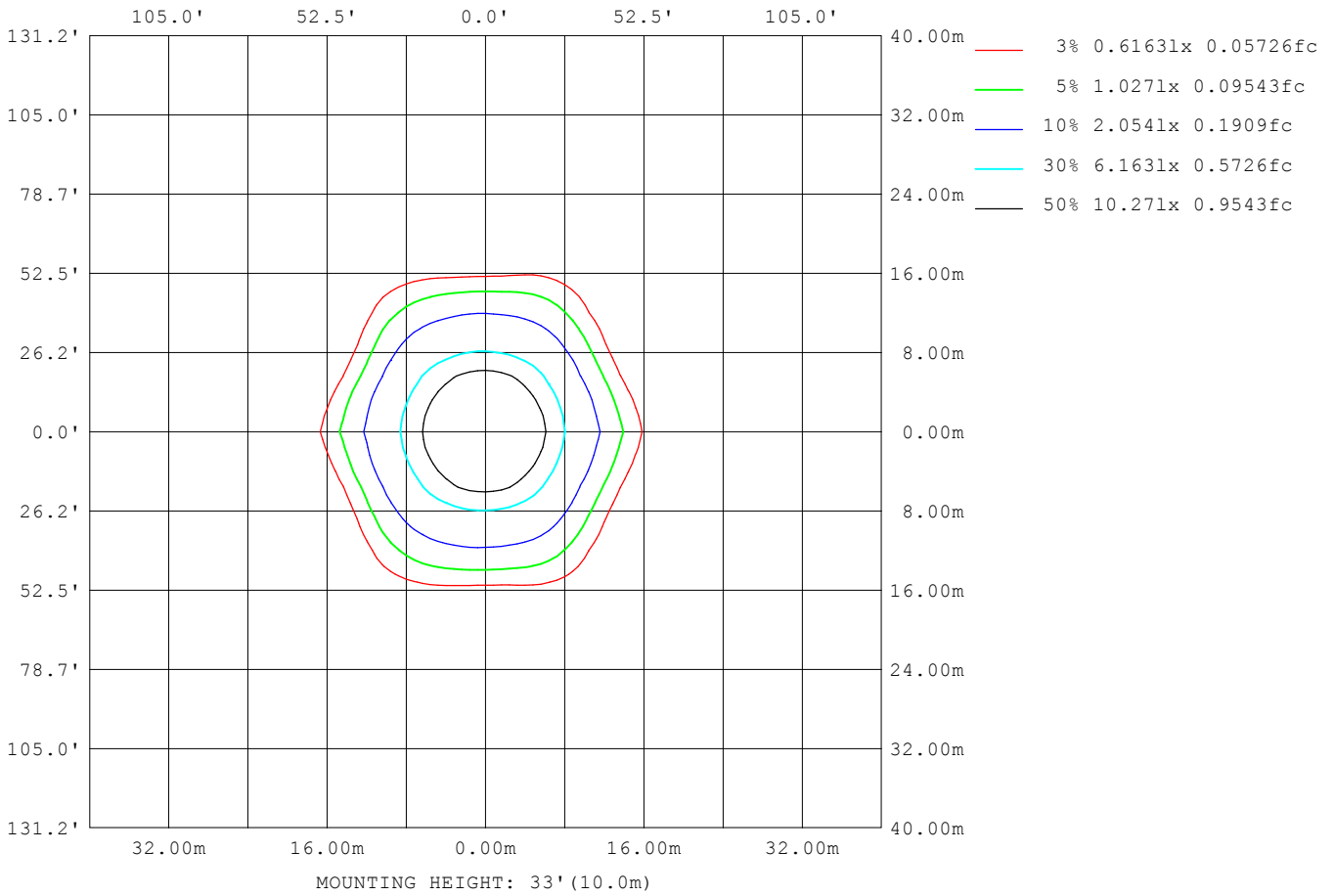
Note:The Curves indicate the illuminated area and the average illumination when the luminaire is at different distance.

H(□) Range:-90 - 90DEG
H(□) Interval: 1.0DEG
Test Speed: HIGH
Temperature:25.3DEG
Operators:
Test Date:2022-10-12

V(B) Range:-75 - 75DEG
V(B) Interval: 5.0DEG
Test System:EVERFINE GO-2000A_V1 SYSTEM V2.0.366
Humidity:65.0%
Test Distance:7.500m [K=1.1000]
Remarks:

ISOLUX DIAGRAM

Test:U:220.21V I:0.1193A P:25.389W PF:0.9666 Freq:49.99Hz Lamp Flux:4167.97x1 lm		
NAME: GLM-BPL6262A-25W	TYPE:LED	WEIGHT:
SPEC.:	DIM.:	SERIAL No.:1
MFR.: EVERFINE	SUR.:	Shielding Angle:



H(□) Range:-90 - 90DEG
H(□) Interval: 1.0DEG
Test Speed: HIGH
Temperature:25.3DEG
Operators:
Test Date:2022-10-12

V(B) Range:-75 - 75DEG
V(B) Interval: 5.0DEG
Test System:EVERFINE GO-2000A_V1 SYSTEM V2.0.366
Humidity:65.0%
Test Distance:7.500m [K=1.1000]
Remarks:

LED Avg.L Report

Test:U:220.21V I:0.1193A P:25.389W PF:0.9666 Freq:49.99Hz Lamp Flux:4167.97x1 lm		
NAME: GLM-BPL6262A-25W	TYPE:LED	WEIGHT:
SPEC.:	DIM.:	SERIAL No.:1
MFR.: EVERFINE	SUR.:	Shielding Angle:

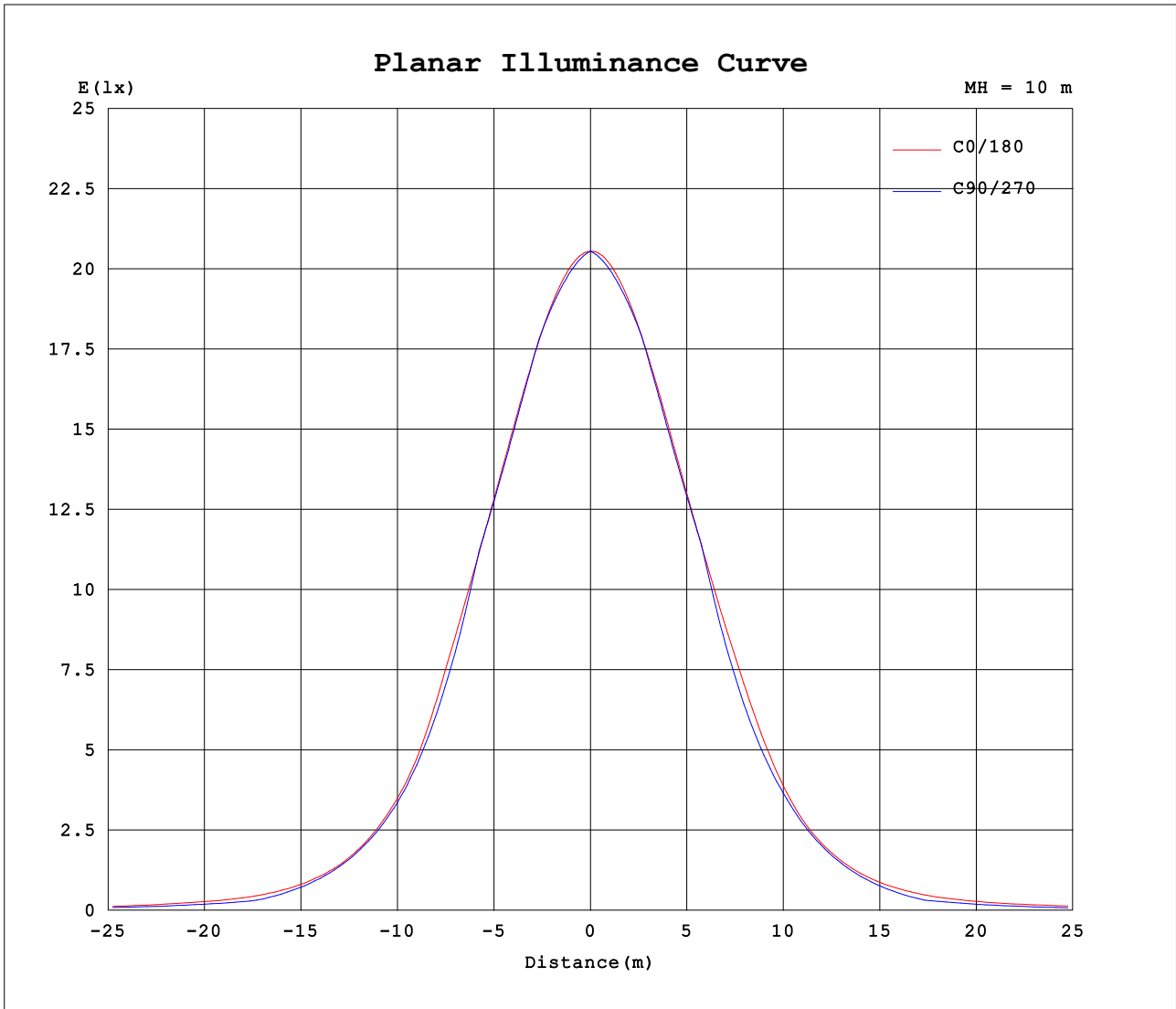
AvgL	cd/m2
L_0~180 (65) av	2072
L_0~180 (75) av	1765
L_0~180 (85) av	282
L_90~270 (65) av	1445
L_90~270 (75) av	1136
L_90~270 (85) av	0
L_45 (65) av	1809
L_45 (75) av	1483
L_45 (85) av	0

Standard: GB/T 29293-2012

H(□) Range:-90 - 90DEG
H(□) Interval: 1.0DEG
Test Speed: HIGH
Temperature:25.3DEG
Operators:
Test Date:2022-10-12

V(B) Range:-75 - 75DEG
V(B) Interval: 5.0DEG
Test System:EVERFINE GO-2000A_V1 SYSTEM V2.0.366
Humidity:65.0%
Test Distance:7.500m [K=1.1000]
Remarks:

Planar Illuminance Curve



H(□) Range:-90 - 90DEG
 H(□) Interval: 1.0DEG
 Test Speed: HIGH
 Temperature:25.3DEG
 Operators:
 Test Date:2022-10-12

V(B) Range:-75 - 75DEG
 V(B) Interval: 5.0DEG
 Test System:EVERFINE GO-2000A_V1 SYSTEM V2.0.366
 Humidity:65.0%
 Test Distance:7.500m [K=1.1000]
 Remarks:

LUMINOUS DISTRIBUTION INTENSITY DATA

Test:U:220.21V I:0.1193A P:25.389W PF:0.9666 Freq:49.99Hz Lamp Flux:4167.97x1 lm		
NAME: GLM-BPL6262A-25W	TYPE:LED	WEIGHT:
SPEC.:	DIM.:	SERIAL No.:1
MFR.: EVERFINE	SUR.:	Shielding Angle:

Table--1

UNIT: cd

C (DEG) □ (DEG)	0	5	10	15	20	25	30	35	40	45	50	55	60	65	70	75	80	85	90
0	2055	2055	2055	2055	2055	2055	2055	2055	2055	2055	2055	2055	2055	2055	2055	2055	2055	2055	2055
5	2043	2041	2039	2038	2036	2035	2034	2033	2032	2031	2031	2030	2030	2029	2029	2029	2029	2028	2028
10	2013	2010	2008	2005	2004	2003	2002	2000	1998	1997	1997	1997	1997	1997	1998	1999	2000	2000	2001
15	1968	1965	1962	1961	1960	1956	1953	1951	1951	1953	1957	1960	1964	1967	1969	1971	1973	1974	1974
20	1905	1902	1901	1900	1894	1891	1891	1897	1905	1912	1910	1901	1896	1892	1890	1889	1889	1890	1891
25	1823	1820	1822	1813	1806	1812	1825	1840	1820	1806	1798	1797	1799	1801	1804	1806	1807	1808	1808
30	1715	1712	1709	1692	1696	1719	1714	1685	1671	1678	1686	1694	1697	1702	1708	1714	1718	1722	1725
35	1556	1553	1532	1508	1548	1540	1494	1492	1509	1518	1528	1546	1535	1518	1500	1485	1475	1469	1468
40	1282	1299	1256	1269	1293	1229	1242	1259	1255	1274	1292	1295	1277	1254	1234	1218	1209	1206	1209
45	990	999	928	989	927	927	935	925	974	1011	1011	1006	1000	988	972	959	951	949	953
50	741	730	680	675	641	635	609	670	691	697	734	756	765	764	752	735	722	717	719
55	527	506	486	434	434	403	429	423	448	479	529	567	587	583	562	529	502	489	489
60	369	351	338	303	264	270	256	273	306	346	398	437	441	420	384	335	288	262	256
65	291	278	254	218	190	164	163	183	227	266	294	310	317	309	289	256	225	209	207
70	222	227	213	185	148	126	124	134	153	190	220	234	240	240	232	210	182	163	157
75	145	151	153	144	125	110	98.6	102	115	132	147	155	161	171	171	155	131	112	108
80	82.0	78.1	72.8	74.9	73.1	68.7	65.6	73.1	83.2	76.3	63.8	50.7	39.4	30.4	20.1	10.4	3.91	0.84	0.00
85	10.9	5.38	7.90	8.74	10.1	10.2	0.00	0.00	0.00	0.00	0.00	0.00	0.00	0.00	0.00	0.00	0.00	0.00	0.00
90	0.00	0.00	0.00	0.00	0.00	0.00	0.00	0.00	0.00	0.00	0.00	0.00	0.00	0.00	0.00	0.00	0.00	0.00	0.00

H(□) Range:-90 - 90DEG
H(□) Interval: 1.0DEG
Test Speed: HIGH
Temperature:25.3DEG
Operators:
Test Date:2022-10-12

V(B) Range:-75 - 75DEG
V(B) Interval: 5.0DEG
Test System:EVERFINE GO-2000A_V1 SYSTEM V2.0.366
Humidity:65.0%
Test Distance:7.500m [K=1.1000]
Remarks:

LUMINOUS DISTRIBUTION INTENSITY DATA

Test:U:220.21V I:0.1193A P:25.389W PF:0.9666 Freq:49.99Hz Lamp Flux:4167.97x1 lm		
NAME: GLM-BPL6262A-25W	TYPE:LED	WEIGHT:
SPEC.:	DIM.:	SERIAL No.:1
MFR.: EVERFINE	SUR.:	Shielding Angle:

Table--2

UNIT: cd

C (DEG) □ (DEG)	95	100	105	110	115	120	125	130	135	140	145	150	155	160	165	170	175	180	185
0	2055	2055	2055	2055	2055	2055	2055	2055	2055	2055	2055	2055	2055	2055	2055	2055	2055	2055	2055
5	2028	2028	2029	2029	2029	2030	2030	2031	2032	2033	2034	2036	2038	2039	2042	2044	2046	2049	2047
10	2001	2002	2002	2002	2002	2001	2001	2000	2000	2000	2000	2000	2002	2005	2009	2013	2018	2024	2019
15	1974	1973	1971	1970	1968	1966	1965	1964	1964	1963	1961	1958	1957	1956	1960	1966	1973	1982	1974
20	1892	1894	1895	1897	1900	1902	1906	1911	1912	1909	1907	1907	1903	1898	1895	1901	1911	1924	1912
25	1809	1808	1808	1808	1809	1810	1814	1819	1821	1827	1835	1831	1830	1827	1818	1814	1828	1846	1829
30	1727	1727	1725	1721	1715	1706	1696	1692	1696	1707	1713	1721	1725	1726	1719	1706	1720	1748	1723
35	1472	1481	1494	1512	1535	1562	1587	1563	1538	1522	1533	1553	1559	1566	1577	1557	1565	1614	1570
40	1217	1227	1239	1254	1272	1289	1306	1329	1352	1323	1278	1286	1324	1330	1344	1342	1325	1401	1333
45	959	966	977	992	1014	1037	1052	1047	1025	1024	1027	977	986	1030	1016	1052	997	1100	1008
50	728	742	757	772	782	778	769	775	772	727	683	680	648	678	689	714	713	805	724
55	499	522	551	578	601	612	602	558	482	471	458	412	419	411	458	464	498	569	506
60	268	301	346	389	424	445	445	421	374	312	257	266	249	263	279	321	354	394	361
65	219	242	269	292	309	322	330	311	263	219	190	153	154	170	202	250	280	298	287
70	166	186	209	229	238	240	238	220	192	161	129	112	111	130	169	204	231	243	232
75	120	136	152	165	161	155	160	157	138	114	93.6	87.3	92.9	108	125	143	154	163	156
80	0.89	4.05	10.2	19.2	27.7	36.4	50.7	65.9	77.6	84.7	70.6	59.4	58.3	64.7	59.6	51.1	45.4	69.7	60.0
85	0.00	0.00	0.00	0.00	0.00	0.00	0.00	0.00	0.00	0.00	0.00	0.00	7.44	5.84	8.43	1.32	0.02	5.67	0.48
90	0.00	0.00	0.00	0.00	0.00	0.00	0.00	0.00	0.00	0.00	0.00	0.00	0.00	0.00	0.00	0.00	0.00	0.00	0.00

H(□) Range:-90 - 90DEG
H(□) Interval: 1.0DEG
Test Speed: HIGH
Temperature:25.3DEG
Operators:
Test Date:2022-10-12

V(B) Range:-75 - 75DEG
V(B) Interval: 5.0DEG
Test System:EVERFINE GO-2000A_V1 SYSTEM V2.0.366
Humidity:65.0%
Test Distance:7.500m [K=1.1000]
Remarks:

LUMINOUS DISTRIBUTION INTENSITY DATA

Test:U:220.21V I:0.1193A P:25.389W PF:0.9666 Freq:49.99Hz Lamp Flux:4167.97x1 lm		
NAME: GLM-BPL6262A-25W	TYPE:LED	WEIGHT:
SPEC.:	DIM.:	SERIAL No.:1
MFR.: EVERFINE	SUR.:	Shielding Angle:

Table--3

UNIT: cd

C (DEG) □ (DEG)	190	195	200	205	210	215	220	225	230	235	240	245	250	255	260	265	270	275	280
0	2055	2055	2055	2055	2055	2055	2055	2055	2055	2055	2055	2055	2055	2055	2055	2055	2055	2055	2055
5	2044	2042	2040	2039	2037	2036	2035	2034	2033	2033	2032	2032	2032	2032	2032	2032	2032	2032	2032
10	2014	2010	2007	2004	2002	2003	2003	2004	2005	2005	2006	2007	2008	2008	2008	2008	2008	2008	2007
15	1967	1961	1958	1960	1962	1965	1968	1969	1970	1971	1973	1976	1978	1980	1982	1983	1984	1984	1983
20	1902	1897	1901	1907	1912	1912	1915	1918	1918	1915	1912	1911	1910	1909	1908	1907	1906	1905	1904
25	1816	1821	1831	1835	1836	1841	1835	1832	1831	1827	1825	1824	1825	1826	1828	1829	1829	1829	1828
30	1711	1725	1733	1734	1731	1726	1722	1714	1712	1716	1726	1735	1743	1749	1752	1752	1751	1748	1744
35	1567	1590	1584	1579	1573	1557	1550	1567	1592	1615	1588	1562	1542	1528	1519	1515	1513	1513	1516
40	1356	1365	1355	1349	1313	1310	1360	1391	1365	1340	1322	1306	1293	1285	1280	1277	1273	1267	1264
45	1073	1048	1055	1007	999	1057	1057	1058	1081	1087	1072	1052	1037	1030	1030	1034	1035	1029	1022
50	738	717	697	660	691	695	745	797	800	797	810	813	804	794	785	780	777	773	778
55	482	474	419	421	410	456	472	490	572	617	628	616	592	563	537	523	519	524	542
60	332	285	262	243	256	243	300	368	421	446	445	422	385	335	292	267	262	276	317
65	258	204	164	141	135	167	194	242	297	320	314	302	286	256	227	208	204	214	242
70	213	175	124	94.1	89.6	100	128	167	203	230	237	235	223	196	167	150	148	162	191
75	154	133	103	75.1	63.8	69.7	89.6	119	144	154	157	164	162	142	115	94.5	89.7	102	127
80	69.9	71.4	64.4	49.4	46.5	55.5	67.6	66.1	60.3	48.0	37.1	28.7	19.0	9.50	3.42	0.70	0.00	0.76	3.80
85	7.26	11.5	4.64	6.62	0.00	0.00	0.00	0.00	0.00	0.00	0.00	0.00	0.00	0.00	0.00	0.00	0.00	0.00	0.00
90	0.00	0.00	0.00	0.00	0.00	0.00	0.00	0.00	0.00	0.00	0.00	0.00	0.00	0.00	0.00	0.00	0.00	0.00	0.00

H(□) Range:-90 - 90DEG
H(□) Interval: 1.0DEG
Test Speed: HIGH
Temperature:25.3DEG
Operators:
Test Date:2022-10-12

V(B) Range:-75 - 75DEG
V(B) Interval: 5.0DEG
Test System:EVERFINE GO-2000A_V1 SYSTEM V2.0.366
Humidity:65.0%
Test Distance:7.500m [K=1.1000]
Remarks:

LUMINOUS DISTRIBUTION INTENSITY DATA

Test:U:220.21V I:0.1193A P:25.389W PF:0.9666 Freq:49.99Hz Lamp Flux:4167.97x1 lm		
NAME: GLM-BPL6262A-25W	TYPE:LED	WEIGHT:
SPEC.:	DIM.:	SERIAL No.:1
MFR.: EVERFINE	SUR.:	Shielding Angle:

Table--4

UNIT: cd

C (DEG) \ □ (DEG)	285	290	295	300	305	310	315	320	325	330	335	340	345	350	355				
0	2055	2055	2055	2055	2055	2055	2055	2055	2055	2055	2055	2055	2055	2055	2055				
5	2032	2032	2032	2033	2033	2033	2034	2034	2035	2035	2036	2037	2038	2040	2041				
10	2005	2004	2003	2003	2002	2002	2002	2003	2004	2005	2006	2006	2007	2009	2011				
15	1981	1979	1976	1972	1968	1964	1960	1957	1957	1957	1959	1963	1963	1964	1965				
20	1904	1904	1905	1908	1913	1919	1920	1912	1904	1897	1896	1898	1903	1903	1903				
25	1826	1823	1820	1817	1815	1815	1822	1833	1849	1834	1819	1812	1818	1825	1822				
30	1739	1734	1728	1724	1721	1713	1703	1694	1703	1728	1731	1708	1702	1715	1716				
35	1524	1537	1554	1573	1587	1569	1556	1542	1520	1520	1562	1568	1525	1544	1559				
40	1269	1281	1299	1320	1338	1337	1318	1295	1296	1276	1261	1322	1295	1275	1308				
45	1022	1029	1037	1041	1043	1047	1048	1013	967	974	961	955	1017	944	1008				
50	791	804	809	801	785	763	721	716	699	628	653	657	692	691	735				
55	575	606	620	613	586	545	487	460	433	438	409	440	440	495	510				
60	373	421	450	459	447	400	347	308	275	255	267	261	304	343	354				
65	283	317	330	323	307	286	258	221	177	156	154	182	214	255	281				
70	226	247	248	239	230	213	179	142	126	117	118	144	182	214	231				
75	159	175	166	154	151	143	127	110	96.2	94.9	109	128	148	161	157				
80	10.6	20.4	28.9	37.1	49.4	63.7	76.3	83.7	70.3	65.6	72.5	83.6	89.0	93.3	92.1				
85	0.00	0.00	0.00	0.00	0.00	0.00	0.00	0.00	0.00	0.00	0.00	11.8	15.4	13.3	20.7	24.5			
90	0.00	0.00	0.00	0.00	0.00	0.00	0.00	0.00	0.00	0.00	0.00	0.00	0.00	0.00	0.00				

H(□) Range:-90 - 90DEG
H(□) Interval: 1.0DEG
Test Speed: HIGH
Temperature:25.3DEG
Operators:
Test Date:2022-10-12

V(B) Range:-75 - 75DEG
V(B) Interval: 5.0DEG
Test System:EVERFINE GO-2000A_V1 SYSTEM V2.0.366
Humidity:65.0%
Test Distance:7.500m [K=1.1000]
Remarks: